

TD Retail Group, LLC

8711 E Point Douglas Rd S #108
Cottage Grove, MN 55016

(651) 315-3377

Sample: 2406AIT0796.1651

Strain: N/A

Batch#: ; Batch Size: g

Sample Received: 06/28/2024; Report Created: 07/05/2024

IndaCouch - Apple Punch

Ingestible, Soft Chew



| | | | |
|--|--|--|---|
| | 0.117% 33.0 mg/container 3.3 mg/serving Total THC | 0.117% 33.1 mg/container 3.3 mg/serving Total CBD | 0.234% 66.1 mg/container 6.6 mg/serving Total Cannabinoids |
|--|--|--|---|

Cannabinoids

Date Tested: 07/01/2024

| Analytes | % | mg/g | mg/ml | mg/serving | LOQ |
|----------|-------|-------|-------|------------|-------|
| CBC | <LOQ | <LOQ | <LOQ | <LOQ | 0.001 |
| CBD | 0.117 | 1.170 | 1.170 | 3.312 | 0.001 |
| CBDa | <LOQ | <LOQ | <LOQ | <LOQ | 0.001 |
| CBDV | <LOQ | <LOQ | <LOQ | <LOQ | 0.001 |
| CBG | <LOQ | <LOQ | <LOQ | <LOQ | 0.001 |
| CBGa | <LOQ | <LOQ | <LOQ | <LOQ | 0.001 |
| CBL | <LOQ | <LOQ | <LOQ | <LOQ | 0.001 |
| CBN | <LOQ | <LOQ | <LOQ | <LOQ | 0.001 |
| Δ8-THC | <LOQ | <LOQ | <LOQ | <LOQ | 0.001 |
| Δ9-THC | 0.117 | 1.165 | 1.165 | 3.297 | 0.001 |
| THCa | <LOQ | <LOQ | <LOQ | <LOQ | 0.001 |
| THCVa | <LOQ | <LOQ | <LOQ | <LOQ | 0.001 |

Method: HPLC
 Total THC = THCa * 0.877 + Δ9-THC
 Total CBD = CBDa * 0.877 + CBD

Total Cannabinoids represents the sum of all cannabinoids in the table above.
 Results are reported on a dry weight basis: Cannabinoid % / (1.0 - moisture content % / 100) = Dry weight cannabinoids %
 LOQ = Limit of Quantitation

Summary

| | |
|----------------------------------|-----------------------------|
| Pass Residual Solvents | Pass Pesticides |
| Pass Mycotoxins | Pass Heavy Metals |
| Pass Microbials | |

4150 98th Ave S
 Fargo, ND
 (888) 897-4367
 www.hempinspection.com



John Schmidt
 Analytical Chemist



Confident LIMS
 All Rights Reserved
 (866) 506-5866

This product has been tested by Adams Independent Testing using valid testing methodologies. Values reported apply only to the product tested and only as the sample was received. Adams Independent Testing makes no claims as to the efficacy, safety, or other risks associated with any detected or nondetected level of any compounds reported herein. This Certificate shall not be reproduced except in full, without the written approval of Adams Independent Testing. Test results that are Pass/Fail are reported using the Oregon Health Authority, Public Health Division - Chapter 333-007-0320, effective 1/1/2021. Results above the Limit will be considered Fail and will be in red. This is for informational purposes only and can be changed upon request. Measurement Uncertainty is not used for pass/fail conditions but available upon request.

TD Retail Group, LLC

8711 E Point Douglas Rd S #108
Cottage Grove, MN 55016

(651) 315-3377

Sample: 2406AIT0796.1651

Strain: N/A

Batch#: ; Batch Size: g

Sample Received: 06/28/2024; Report Created: 07/05/2024

IndaCouch - Apple Punch

Ingestible, Soft Chew

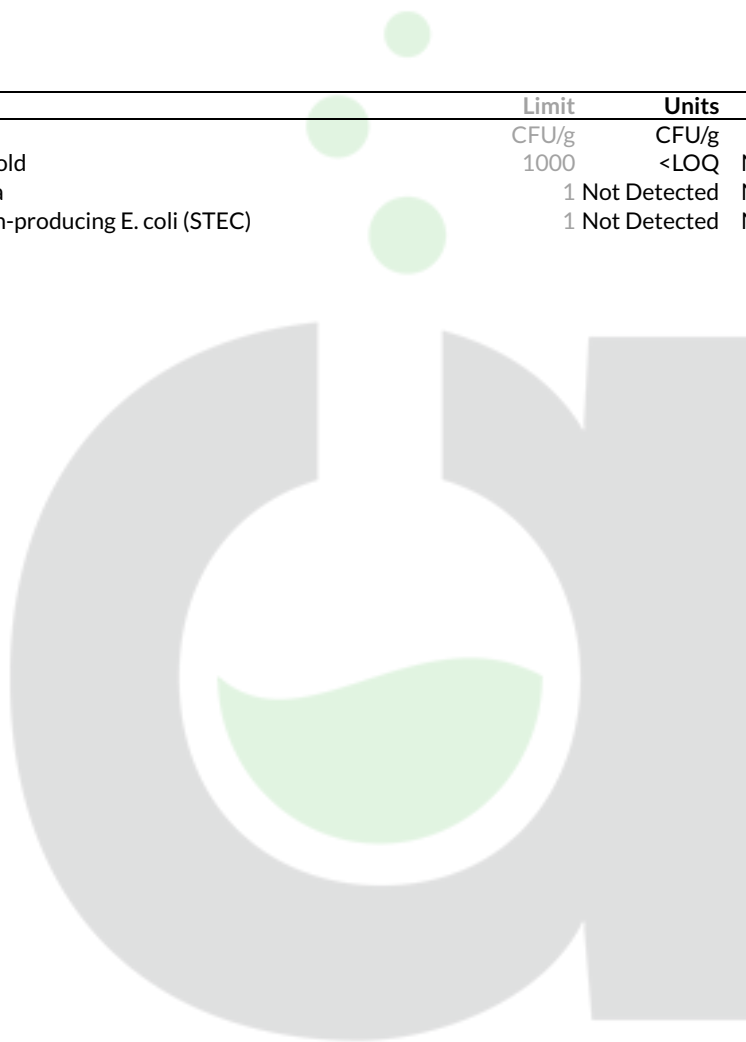


Microbials

Pass

Date Tested: 07/01/2024

| Analyte | Limit | Units | Status |
|--------------------------------------|-------|--------------|-------------|
| Yeast & Mold | 1000 | CFU/g | Not Present |
| Salmonella | 1 | Not Detected | Not Present |
| Shiga Toxin-producing E. coli (STEC) | 1 | Not Detected | Not Present |



Method: qPCR



John Schmidt

Analytical Chemist

TD Retail Group, LLC

8711 E Point Douglas Rd S #108
Cottage Grove, MN 55016

(651) 315-3377

Sample: 2406AIT0796.1651

Strain: N/A

Batch#: ; Batch Size: g

Sample Received: 06/28/2024; Report Created: 07/05/2024

IndaCouch - Apple Punch

Ingestible, Soft Chew



Mycotoxins

Pass

Date Tested: 07/01/2024

| Analyte | LOQ | Limit | Units | Status |
|--------------|------|-------|-------|--------|
| | PPB | PPB | PPB | |
| Aflatoxin B1 | 1.00 | 20.00 | <LOQ | Pass |
| Aflatoxin B2 | 1.00 | 20.00 | <LOQ | Pass |
| Aflatoxin G1 | 1.00 | 20.00 | <LOQ | Pass |
| Aflatoxin G2 | 1.00 | 20.00 | <LOQ | Pass |
| Ochratoxin A | 1.00 | 20.00 | <LOQ | Pass |



Method: LCMS

4150 98th Ave S
Fargo, ND
(888) 897-4367
www.hempinspection.com




John Schmidt
Analytical Chemist



Confident LIMS
All Rights Reserved
(866) 506-5866

This product has been tested by Adams Independent Testing using valid testing methodologies. Values reported apply only to the product tested and only as the sample was received. Adams Independent Testing makes no claims as to the efficacy, safety, or other risks associated with any detected or nondetected level of any compounds reported herein. This Certificate shall not be reproduced except in full, without the written approval of Adams Independent Testing. Test results that are Pass/Fail are reported using the Oregon Health Authority, Public Health Division - Chapter 333-007-0320, effective 1/1/2021. Results above the Limit will be considered Fail and will be in red. This is for informational purposes only and can be changed upon request. Measurement Uncertainty is not used for pass/fail conditions but available upon request.

TD Retail Group, LLC

8711 E Point Douglas Rd S #108
Cottage Grove, MN 55016

(651) 315-3377

Sample: 2406AIT0796.1651

Strain: N/A

Batch#: ; Batch Size: g

Sample Received: 06/28/2024; Report Created: 07/05/2024

IndaCouch - Apple Punch

Ingestible, Soft Chew

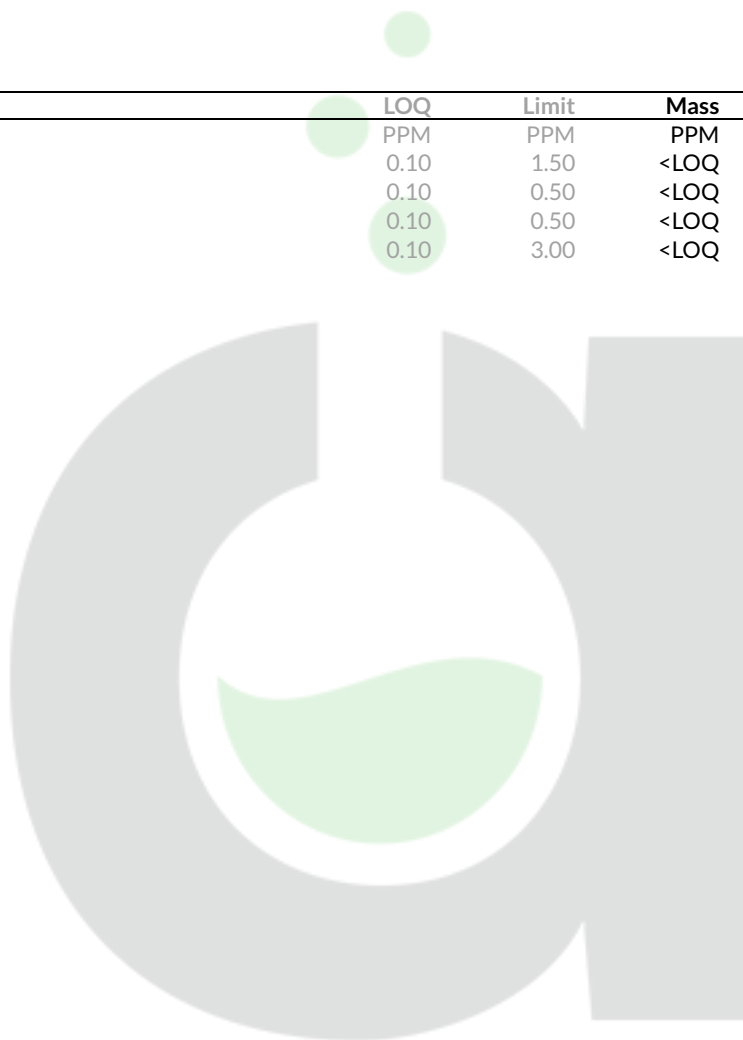


Heavy Metals

Pass

Date Tested: 07/01/2024

| Analyte | LOQ | Limit | Mass | Status |
|---------|------|-------|------|--------|
| | PPM | PPM | PPM | |
| Arsenic | 0.10 | 1.50 | <LOQ | Pass |
| Cadmium | 0.10 | 0.50 | <LOQ | Pass |
| Lead | 0.10 | 0.50 | <LOQ | Pass |
| Mercury | 0.10 | 3.00 | <LOQ | Pass |



Method: ICPMS

4150 98th Ave S
Fargo, ND
(888) 897-4367
www.hempinspection.com



John Schmidt

Analytical Chemist

Confident LIMS
All Rights Reserved
(866) 506-5866

This product has been tested by Adams Independent Testing using valid testing methodologies. Values reported apply only to the product tested and only as the sample was received. Adams Independent Testing makes no claims as to the efficacy, safety, or other risks associated with any detected or nondetected level of any compounds reported herein. This Certificate shall not be reproduced except in full, without the written approval of Adams Independent Testing. Test results that are Pass/Fail are reported using the Oregon Health Authority, Public Health Division - Chapter 333-007-0320, effective 1/1/2021. Results above the Limit will be considered Fail and will be in red. This is for informational purposes only and can be changed upon request. Measurement Uncertainty is not used for pass/fail conditions but available upon request.

TD Retail Group, LLC

8711 E Point Douglas Rd S #108
Cottage Grove, MN 55016

(651) 315-3377

Sample: 2406AIT0796.1651

Strain: N/A

Batch#: ; Batch Size: g

Sample Received: 06/28/2024; Report Created: 07/05/2024

IndaCouch - Apple Punch

Ingestible, Soft Chew



Pesticides

Pass

Date Tested: 07/01/2024

| Analyte | LOQ | Limit | Mass | Status |
|---------------------|------|-------|------|--------|
| | PPM | PPM | PPM | |
| Abamectin | 0.01 | 0.50 | <LOQ | Pass |
| Acephate | 0.01 | 0.40 | <LOQ | Pass |
| Acequinocyl | 0.01 | 2.00 | <LOQ | Pass |
| Acetamiprid | 0.01 | 0.20 | <LOQ | Pass |
| Aldicarb | 0.01 | 0.40 | <LOQ | Pass |
| Azoxystrobin | 0.01 | 0.20 | <LOQ | Pass |
| Bifenazate | 0.01 | 0.20 | <LOQ | Pass |
| Bifenthrin | 0.01 | 0.20 | <LOQ | Pass |
| Boscalid | 0.01 | 0.40 | <LOQ | Pass |
| Carbaryl | 0.01 | 0.20 | <LOQ | Pass |
| Carbofuran | 0.01 | 0.20 | <LOQ | Pass |
| Chlorantraniliprole | 0.01 | 0.20 | <LOQ | Pass |
| Chlorfenapyr | 0.01 | 1.00 | <LOQ | Pass |
| Chlorpyrifos | 0.01 | 0.20 | <LOQ | Pass |
| Clofentezine | 0.01 | 0.20 | <LOQ | Pass |
| Cyfluthrin | 0.01 | 1.00 | <LOQ | Pass |
| Cypermethrin | 0.01 | 1.00 | <LOQ | Pass |
| Daminozide | 0.01 | 1.00 | <LOQ | Pass |
| DDVP | 0.01 | 1.00 | <LOQ | Pass |
| Diazinon | 0.01 | 0.20 | <LOQ | Pass |
| Dimethoate | 0.01 | 0.20 | <LOQ | Pass |
| Ethoprophos | 0.01 | 0.20 | <LOQ | Pass |
| Etofenprox | 0.01 | 0.40 | <LOQ | Pass |
| Etoxazole | 0.01 | 0.20 | <LOQ | Pass |
| Fenoxycarb | 0.01 | 0.20 | <LOQ | Pass |

Methods: LCMS and GCMS

4150 98th Ave S
Fargo, ND
(888) 897-4367
www.hempinspection.com




John Schmidt
Analytical Chemist



Confident LIMS
All Rights Reserved
(866) 506-5866

This product has been tested by Adams Independent Testing using valid testing methodologies. Values reported apply only to the product tested and only as the sample was received. Adams Independent Testing makes no claims as to the efficacy, safety, or other risks associated with any detected or nondetected level of any compounds reported herein. This Certificate shall not be reproduced except in full, without the written approval of Adams Independent Testing. Test results that are Pass/Fail are reported using the Oregon Health Authority, Public Health Division - Chapter 333-007-0320, effective 1/1/2021. Results above the Limit will be considered Fail and will be in red. This is for informational purposes only and can be changed upon request. Measurement Uncertainty is not used for pass/fail conditions but available upon request.

TD Retail Group, LLC

8711 E Point Douglas Rd S #108
Cottage Grove, MN 55016

(651) 315-3377

Sample: 2406AIT0796.1651

Strain: N/A

Batch#: ; Batch Size: g

Sample Received: 06/28/2024; Report Created: 07/05/2024

IndaCouch - Apple Punch

Ingestible, Soft Chew



Pesticides

Pass

Date Tested: 07/01/2024

| Analyte | LOQ | Limit | Mass | Status |
|--------------------|------|-------|------|--------|
| | PPM | PPM | PPM | |
| Fenpyroximate | 0.01 | 0.40 | <LOQ | Pass |
| Fipronil | 0.01 | 0.40 | <LOQ | Pass |
| Flonicamid | 0.01 | 1.00 | <LOQ | Pass |
| Fludioxonil | 0.01 | 0.40 | <LOQ | Pass |
| Hexythiazox | 0.01 | 1.00 | <LOQ | Pass |
| Imazalil | 0.01 | 0.20 | <LOQ | Pass |
| Imidacloprid | 0.01 | 0.40 | <LOQ | Pass |
| Kresoxim Methyl | 0.01 | 0.40 | <LOQ | Pass |
| Malathion | 0.01 | 0.20 | <LOQ | Pass |
| Metalaxyl | 0.01 | 0.20 | <LOQ | Pass |
| Methiocarb | 0.01 | 0.20 | <LOQ | Pass |
| Methomyl | 0.01 | 0.40 | <LOQ | Pass |
| Methyl Parathion | 0.01 | 0.20 | <LOQ | Pass |
| MGK-264 | 0.01 | 0.20 | <LOQ | Pass |
| Myclobutanil | 0.01 | 0.20 | <LOQ | Pass |
| Naled | 0.01 | 0.50 | <LOQ | Pass |
| Oxamyl | 0.01 | 1.00 | <LOQ | Pass |
| Paclobutrazol | 0.01 | 0.40 | <LOQ | Pass |
| Permethrins | 0.01 | 0.20 | <LOQ | Pass |
| Phosmet | 0.01 | 0.20 | <LOQ | Pass |
| Piperonyl Butoxide | 0.01 | 2.00 | <LOQ | Pass |
| Prallethrin | 0.01 | 0.20 | <LOQ | Pass |
| Propiconazole | 0.01 | 0.40 | <LOQ | Pass |
| Propoxur | 0.01 | 0.20 | <LOQ | Pass |
| Pyrethrins | 0.01 | 1.00 | <LOQ | Pass |

Methods: LCMS and GCMS

4150 98th Ave S
Fargo, ND
(888) 897-4367
www.hempinspection.com




John Schmidt
Analytical Chemist



Confident LIMS
All Rights Reserved
(866) 506-5866

This product has been tested by Adams Independent Testing using valid testing methodologies. Values reported apply only to the product tested and only as the sample was received. Adams Independent Testing makes no claims as to the efficacy, safety, or other risks associated with any detected or nondetected level of any compounds reported herein. This Certificate shall not be reproduced except in full, without the written approval of Adams Independent Testing. Test results that are Pass/Fail are reported using the Oregon Health Authority, Public Health Division - Chapter 333-007-0320, effective 1/1/2021. Results above the Limit will be considered Fail and will be in red. This is for informational purposes only and can be changed upon request. Measurement Uncertainty is not used for pass/fail conditions but available upon request.

TD Retail Group, LLC

8711 E Point Douglas Rd S #108
Cottage Grove, MN 55016

(651) 315-3377

Sample: 2406AIT0796.1651

Strain: N/A

Batch#: ; Batch Size: g

Sample Received: 06/28/2024; Report Created: 07/05/2024

IndaCouch - Apple Punch

Ingestible, Soft Chew



Pesticides

Pass

Date Tested: 07/01/2024

| Analyte | LOQ | Limit | Mass | Status |
|-----------------|------|-------|------|--------|
| | PPM | PPM | PPM | |
| Pyridaben | 0.01 | 0.20 | <LOQ | Pass |
| Spinosad | 0.01 | 0.20 | <LOQ | Pass |
| Spiromesifen | 0.01 | 0.20 | <LOQ | Pass |
| Spirotetramat | 0.01 | 0.20 | <LOQ | Pass |
| Spiroxamine | 0.01 | 0.40 | <LOQ | Pass |
| Tebuconazole | 0.01 | 0.40 | <LOQ | Pass |
| Thiacloprid | 0.01 | 0.20 | <LOQ | Pass |
| Thiamethoxam | 0.01 | 0.20 | <LOQ | Pass |
| Trifloxystrobin | 0.01 | 0.20 | <LOQ | Pass |

Methods: LCMS and GCMS

4150 98th Ave S
Fargo, ND
(888) 897-4367
www.hempinspection.com




John Schmidt
Analytical Chemist



Confident LIMS
All Rights Reserved
(866) 506-5866

This product has been tested by Adams Independent Testing using valid testing methodologies. Values reported apply only to the product tested and only as the sample was received. Adams Independent Testing makes no claims as to the efficacy, safety, or other risks associated with any detected or nondetected level of any compounds reported herein. This Certificate shall not be reproduced except in full, without the written approval of Adams Independent Testing. Test results that are Pass/Fail are reported using the Oregon Health Authority, Public Health Division - Chapter 333-007-0320, effective 1/1/2021. Results above the Limit will be considered Fail and will be in red. This is for informational purposes only and can be changed upon request. Measurement Uncertainty is not used for pass/fail conditions but available upon request.

TD Retail Group, LLC

8711 E Point Douglas Rd S #108
Cottage Grove, MN 55016

(651) 315-3377

Sample: 2406AIT0796.1651

Strain: N/A

Batch#: ; Batch Size: g

Sample Received: 06/28/2024; Report Created: 07/05/2024

IndaCouch - Apple Punch

Ingestible, Soft Chew



Residual Solvents

Pass

Date Tested: 07/01/2024

| Analyte | LOQ | Limit | Mass | Status |
|-------------------|----------|----------|------|--------|
| | PPM | PPM | PPM | |
| 1,4-Dioxane | 71.250 | 380.000 | <LOQ | Pass |
| 2-Butanol | 437.500 | 5000.000 | <LOQ | Pass |
| 2-Ethoxy-Ethanol | 30.000 | 160.000 | <LOQ | Pass |
| 2-Propanol IPA | 437.500 | 5000.000 | <LOQ | Pass |
| Acetone | 437.500 | 5000.000 | <LOQ | Pass |
| Acetonitrile | 76.880 | 410.000 | <LOQ | Pass |
| Benzene | 0.375 | 2.000 | <LOQ | Pass |
| Butanes | 156.300 | 5000.000 | <LOQ | Pass |
| Cumene | 13.130 | 70.000 | <LOQ | Pass |
| Cyclohexane | 727.500 | 3880.000 | <LOQ | Pass |
| Dichloromethane | 112.500 | 600.000 | <LOQ | Pass |
| Ethanol | 437.500 | 5000.000 | <LOQ | Pass |
| Ethyl-Acetate | 437.500 | 5000.000 | <LOQ | Pass |
| Ethyl-Ether | 437.500 | 5000.000 | <LOQ | Pass |
| Ethylene Glycol | 116.300 | 620.000 | <LOQ | Pass |
| Ethylene Oxide | 9.375 | 50.000 | <LOQ | Pass |
| Heptane | 437.500 | 5000.000 | <LOQ | Pass |
| Hexanes | 217.500 | 290.000 | <LOQ | Pass |
| Isopropyl-Acetate | 437.500 | 5000.000 | <LOQ | Pass |
| Methanol | 312.500 | 3000.000 | <LOQ | Pass |
| Pentanes | 953.100 | 5000.000 | <LOQ | Pass |
| Propane | 31.250 | 5000.000 | <LOQ | Pass |
| Tetrahydrofuran | 135.000 | 720.000 | <LOQ | Pass |
| Toluene | 166.900 | 890.000 | <LOQ | Pass |
| Xylenes | 1221.000 | 2170.000 | <LOQ | Pass |

Method: GCMS (Headspace)

4150 98th Ave S
Fargo, ND
(888) 897-4367
www.hempinspection.com




John Schmidt

Analytical Chemist

Confident LIMS
All Rights Reserved
(866) 506-5866

This product has been tested by Adams Independent Testing using valid testing methodologies. Values reported apply only to the product tested and only as the sample was received. Adams Independent Testing makes no claims as to the efficacy, safety, or other risks associated with any detected or nondetected level of any compounds reported herein. This Certificate shall not be reproduced except in full, without the written approval of Adams Independent Testing. Test results that are Pass/Fail are reported using the Oregon Health Authority, Public Health Division - Chapter 333-007-0320, effective 1/1/2021. Results above the Limit will be considered Fail and will be in red. This is for informational purposes only and can be changed upon request. Measurement Uncertainty is not used for pass/fail conditions but available upon request.

TD Retail Group, LLC

8711 E Point Douglas Rd S #108
Cottage Grove, MN 55016

(651) 315-3377

Sample: 2406AIT0796.1652

Strain: N/A

Batch#: ; Batch Size: g

Sample Received: 06/28/2024; Report Created: 07/05/2024

IndaCouch - Fruit Punch

Ingestible, Soft Chew



0.116%
32.7 mg/container
3.3 mg/serving

Total THC

0.110 %
31.2 mg/container
3.1 mg/serving

Total CBD

0.226%
64.0 mg/container
6.4 mg/serving

Total Cannabinoids

Cannabinoids

Date Tested: 07/01/2024

| Analytes | % | mg/g | mg/ml | mg/serving | LOQ |
|----------|-------|-------|-------|------------|-------|
| CBC | <LOQ | <LOQ | <LOQ | <LOQ | 0.001 |
| CBD | 0.110 | 1.103 | 1.103 | 3.122 | 0.001 |
| CBDa | <LOQ | <LOQ | <LOQ | <LOQ | 0.001 |
| CBDV | <LOQ | <LOQ | <LOQ | <LOQ | 0.001 |
| CBG | <LOQ | <LOQ | <LOQ | <LOQ | 0.001 |
| CBGa | <LOQ | <LOQ | <LOQ | <LOQ | 0.001 |
| CBL | <LOQ | <LOQ | <LOQ | <LOQ | 0.001 |
| CBN | <LOQ | <LOQ | <LOQ | <LOQ | 0.001 |
| Δ8-THC | <LOQ | <LOQ | <LOQ | <LOQ | 0.001 |
| Δ9-THC | 0.116 | 1.157 | 1.157 | 3.275 | 0.001 |
| THCa | <LOQ | <LOQ | <LOQ | <LOQ | 0.001 |
| THCVa | <LOQ | <LOQ | <LOQ | <LOQ | 0.001 |

Method: HPLC
Total THC = THCa * 0.877 + Δ9-THC
Total CBD = CBDa * 0.877 + CBD

Total Cannabinoids represents the sum of all cannabinoids in the table above.
Results are reported on a dry weight basis: Cannabinoid % / (1.0 - moisture content % / 100) = Dry weight cannabinoids %
LOQ = Limit of Quantitation

Summary

Pass

Residual Solvents

Pass

Pesticides

Pass

Mycotoxins

Pass

Heavy Metals

Pass

Microbials

4150 98th Ave S
Fargo, ND
(888) 897-4367
www.hempinspection.com




John Schmidt
Analytical Chemist



Confident LIMS
All Rights Reserved
(866) 506-5866

This product has been tested by Adams Independent Testing using valid testing methodologies. Values reported apply only to the product tested and only as the sample was received. Adams Independent Testing makes no claims as to the efficacy, safety, or other risks associated with any detected or nondetected level of any compounds reported herein. This Certificate shall not be reproduced except in full, without the written approval of Adams Independent Testing. Test results that are Pass/Fail are reported using the Oregon Health Authority, Public Health Division - Chapter 333-007-0320, effective 1/1/2021. Results above the Limit will be considered Fail and will be in red. This is for informational purposes only and can be changed upon request. Measurement Uncertainty is not used for pass/fail conditions but available upon request.

TD Retail Group, LLC

8711 E Point Douglas Rd S #108
Cottage Grove, MN 55016

(651) 315-3377

Sample: 2406AIT0796.1652

Strain: N/A

Batch#: ; Batch Size: g

Sample Received: 06/28/2024; Report Created: 07/05/2024

IndaCouch - Fruit Punch

Ingestible, Soft Chew

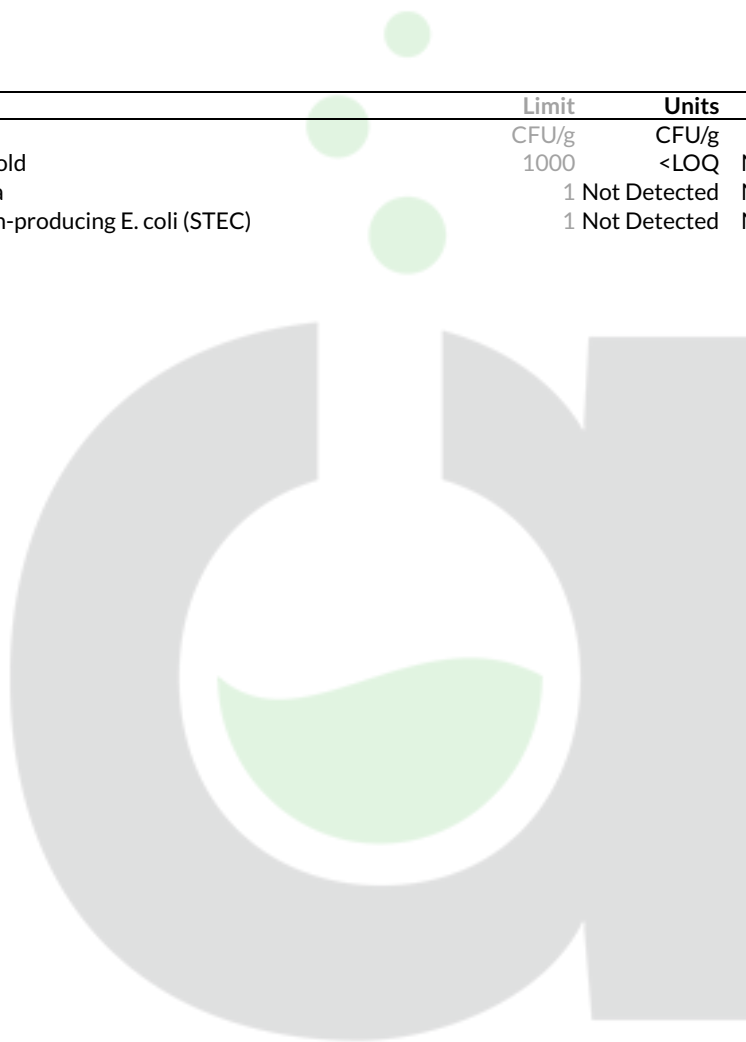


Microbials

Pass

Date Tested: 07/01/2024

| Analyte | Limit | Units | Status |
|--------------------------------------|-------|--------------|-------------|
| Yeast & Mold | 1000 | CFU/g | Not Present |
| Salmonella | 1 | Not Detected | Not Present |
| Shiga Toxin-producing E. coli (STEC) | 1 | Not Detected | Not Present |



Method: qPCR



John Schmidt

Analytical Chemist

TD Retail Group, LLC

8711 E Point Douglas Rd S #108
Cottage Grove, MN 55016

(651) 315-3377

Sample: 2406AIT0796.1652

Strain: N/A

Batch#: ; Batch Size: g

Sample Received: 06/28/2024; Report Created: 07/05/2024

IndaCouch - Fruit Punch

Ingestible, Soft Chew



Mycotoxins

Pass

Date Tested: 07/01/2024

| Analyte | LOQ | Limit | Units | Status |
|--------------|------|-------|-------|--------|
| | PPB | PPB | PPB | |
| Aflatoxin B1 | 1.00 | 20.00 | <LOQ | Pass |
| Aflatoxin B2 | 1.00 | 20.00 | <LOQ | Pass |
| Aflatoxin G1 | 1.00 | 20.00 | <LOQ | Pass |
| Aflatoxin G2 | 1.00 | 20.00 | <LOQ | Pass |
| Ochratoxin A | 1.00 | 20.00 | <LOQ | Pass |



Method: LCMS

4150 98th Ave S
Fargo, ND
(888) 897-4367
www.hempinspection.com




John Schmidt
Analytical Chemist



Confident LIMS
All Rights Reserved
(866) 506-5866

This product has been tested by Adams Independent Testing using valid testing methodologies. Values reported apply only to the product tested and only as the sample was received. Adams Independent Testing makes no claims as to the efficacy, safety, or other risks associated with any detected or nondetected level of any compounds reported herein. This Certificate shall not be reproduced except in full, without the written approval of Adams Independent Testing. Test results that are Pass/Fail are reported using the Oregon Health Authority, Public Health Division - Chapter 333-007-0320, effective 1/1/2021. Results above the Limit will be considered Fail and will be in red. This is for informational purposes only and can be changed upon request. Measurement Uncertainty is not used for pass/fail conditions but available upon request.

TD Retail Group, LLC

8711 E Point Douglas Rd S #108
Cottage Grove, MN 55016

(651) 315-3377

Sample: 2406AIT0796.1652

Strain: N/A

Batch#: ; Batch Size: g

Sample Received: 06/28/2024; Report Created: 07/05/2024

IndaCouch - Fruit Punch

Ingestible, Soft Chew

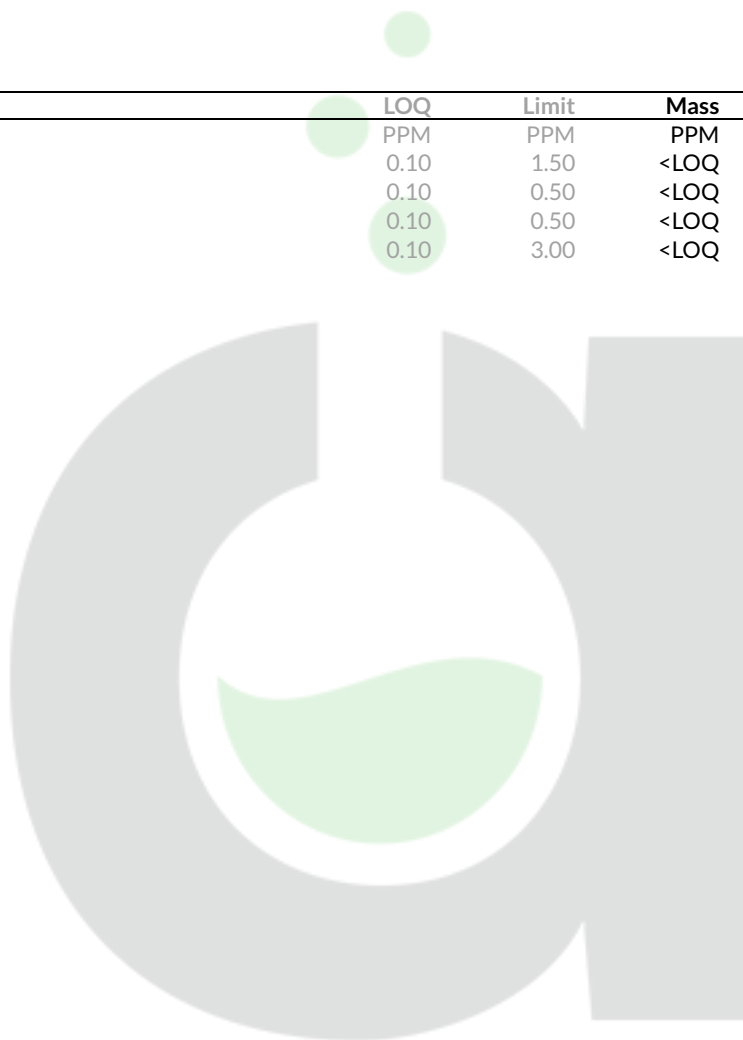


Heavy Metals

Pass

Date Tested: 07/01/2024

| Analyte | LOQ | Limit | Mass | Status |
|---------|------|-------|------|--------|
| | PPM | PPM | PPM | |
| Arsenic | 0.10 | 1.50 | <LOQ | Pass |
| Cadmium | 0.10 | 0.50 | <LOQ | Pass |
| Lead | 0.10 | 0.50 | <LOQ | Pass |
| Mercury | 0.10 | 3.00 | <LOQ | Pass |



Method: ICPMS

4150 98th Ave S
Fargo, ND
(888) 897-4367
www.hempinspection.com



John Schmidt

Analytical Chemist

Confident LIMS
All Rights Reserved
(866) 506-5866

This product has been tested by Adams Independent Testing using valid testing methodologies. Values reported apply only to the product tested and only as the sample was received. Adams Independent Testing makes no claims as to the efficacy, safety, or other risks associated with any detected or nondetected level of any compounds reported herein. This Certificate shall not be reproduced except in full, without the written approval of Adams Independent Testing. Test results that are Pass/Fail are reported using the Oregon Health Authority, Public Health Division - Chapter 333-007-0320, effective 1/1/2021. Results above the Limit will be considered Fail and will be in red. This is for informational purposes only and can be changed upon request. Measurement Uncertainty is not used for pass/fail conditions but available upon request.

TD Retail Group, LLC

8711 E Point Douglas Rd S #108
Cottage Grove, MN 55016

(651) 315-3377

Sample: 2406AIT0796.1652

Strain: N/A

Batch#: ; Batch Size: g

Sample Received: 06/28/2024; Report Created: 07/05/2024

IndaCouch - Fruit Punch

Ingestible, Soft Chew



Pesticides

Pass

Date Tested: 07/01/2024

| Analyte | LOQ | Limit | Mass | Status |
|---------------------|------|-------|------|--------|
| | PPM | PPM | PPM | |
| Abamectin | 0.01 | 0.50 | <LOQ | Pass |
| Acephate | 0.01 | 0.40 | <LOQ | Pass |
| Acequinocyl | 0.01 | 2.00 | <LOQ | Pass |
| Acetamiprid | 0.01 | 0.20 | <LOQ | Pass |
| Aldicarb | 0.01 | 0.40 | <LOQ | Pass |
| Azoxystrobin | 0.01 | 0.20 | <LOQ | Pass |
| Bifenazate | 0.01 | 0.20 | <LOQ | Pass |
| Bifenthrin | 0.01 | 0.20 | <LOQ | Pass |
| Boscalid | 0.01 | 0.40 | <LOQ | Pass |
| Carbaryl | 0.01 | 0.20 | <LOQ | Pass |
| Carbofuran | 0.01 | 0.20 | <LOQ | Pass |
| Chlorantraniliprole | 0.01 | 0.20 | <LOQ | Pass |
| Chlorfenapyr | 0.01 | 1.00 | <LOQ | Pass |
| Chlorpyrifos | 0.01 | 0.20 | <LOQ | Pass |
| Clofentezine | 0.01 | 0.20 | <LOQ | Pass |
| Cyfluthrin | 0.01 | 1.00 | <LOQ | Pass |
| Cypermethrin | 0.01 | 1.00 | <LOQ | Pass |
| Daminozide | 0.01 | 1.00 | <LOQ | Pass |
| DDVP | 0.01 | 1.00 | <LOQ | Pass |
| Diazinon | 0.01 | 0.20 | <LOQ | Pass |
| Dimethoate | 0.01 | 0.20 | <LOQ | Pass |
| Ethoprophos | 0.01 | 0.20 | <LOQ | Pass |
| Etofenprox | 0.01 | 0.40 | <LOQ | Pass |
| Etoxazole | 0.01 | 0.20 | <LOQ | Pass |
| Fenoxycarb | 0.01 | 0.20 | <LOQ | Pass |

Methods: LCMS and GCMS

4150 98th Ave S
Fargo, ND
(888) 897-4367
www.hempinspection.com




John Schmidt
Analytical Chemist



Confident LIMS
All Rights Reserved
(866) 506-5866

This product has been tested by Adams Independent Testing using valid testing methodologies. Values reported apply only to the product tested and only as the sample was received. Adams Independent Testing makes no claims as to the efficacy, safety, or other risks associated with any detected or nondetected level of any compounds reported herein. This Certificate shall not be reproduced except in full, without the written approval of Adams Independent Testing. Test results that are Pass/Fail are reported using the Oregon Health Authority, Public Health Division - Chapter 333-007-0320, effective 1/1/2021. Results above the Limit will be considered Fail and will be in red. This is for informational purposes only and can be changed upon request. Measurement Uncertainty is not used for pass/fail conditions but available upon request.

TD Retail Group, LLC

8711 E Point Douglas Rd S #108
Cottage Grove, MN 55016

(651) 315-3377

Sample: 2406AIT0796.1652

Strain: N/A

Batch#: ; Batch Size: g

Sample Received: 06/28/2024; Report Created: 07/05/2024

IndaCouch - Fruit Punch

Ingestible, Soft Chew



Pesticides

Pass

Date Tested: 07/01/2024

| Analyte | LOQ | Limit | Mass | Status |
|--------------------|------|-------|------|--------|
| | PPM | PPM | PPM | |
| Fenpyroximate | 0.01 | 0.40 | <LOQ | Pass |
| Fipronil | 0.01 | 0.40 | <LOQ | Pass |
| Flonicamid | 0.01 | 1.00 | <LOQ | Pass |
| Fludioxonil | 0.01 | 0.40 | <LOQ | Pass |
| Hexythiazox | 0.01 | 1.00 | <LOQ | Pass |
| Imazalil | 0.01 | 0.20 | <LOQ | Pass |
| Imidacloprid | 0.01 | 0.40 | <LOQ | Pass |
| Kresoxim Methyl | 0.01 | 0.40 | <LOQ | Pass |
| Malathion | 0.01 | 0.20 | <LOQ | Pass |
| Metalaxyl | 0.01 | 0.20 | <LOQ | Pass |
| Methiocarb | 0.01 | 0.20 | <LOQ | Pass |
| Methomyl | 0.01 | 0.40 | <LOQ | Pass |
| Methyl Parathion | 0.01 | 0.20 | <LOQ | Pass |
| MGK-264 | 0.01 | 0.20 | <LOQ | Pass |
| Myclobutanil | 0.01 | 0.20 | <LOQ | Pass |
| Naled | 0.01 | 0.50 | <LOQ | Pass |
| Oxamyl | 0.01 | 1.00 | <LOQ | Pass |
| Paclobutrazol | 0.01 | 0.40 | <LOQ | Pass |
| Permethrins | 0.01 | 0.20 | <LOQ | Pass |
| Phosmet | 0.01 | 0.20 | <LOQ | Pass |
| Piperonyl Butoxide | 0.01 | 2.00 | <LOQ | Pass |
| Prallethrin | 0.01 | 0.20 | <LOQ | Pass |
| Propiconazole | 0.01 | 0.40 | <LOQ | Pass |
| Propoxur | 0.01 | 0.20 | <LOQ | Pass |
| Pyrethrins | 0.01 | 1.00 | <LOQ | Pass |

Methods: LCMS and GCMS

4150 98th Ave S
Fargo, ND
(888) 897-4367
www.hempinspection.com




John Schmidt
Analytical Chemist



Confident LIMS
All Rights Reserved
(866) 506-5866

This product has been tested by Adams Independent Testing using valid testing methodologies. Values reported apply only to the product tested and only as the sample was received. Adams Independent Testing makes no claims as to the efficacy, safety, or other risks associated with any detected or nondetected level of any compounds reported herein. This Certificate shall not be reproduced except in full, without the written approval of Adams Independent Testing. Test results that are Pass/Fail are reported using the Oregon Health Authority, Public Health Division - Chapter 333-007-0320, effective 1/1/2021. Results above the Limit will be considered Fail and will be in red. This is for informational purposes only and can be changed upon request. Measurement Uncertainty is not used for pass/fail conditions but available upon request.

TD Retail Group, LLC

8711 E Point Douglas Rd S #108
Cottage Grove, MN 55016

(651) 315-3377

Sample: 2406AIT0796.1652

Strain: N/A

Batch#: ; Batch Size: g

Sample Received: 06/28/2024; Report Created: 07/05/2024

IndaCouch - Fruit Punch

Ingestible, Soft Chew



Pesticides

Pass

Date Tested: 07/01/2024

| Analyte | LOQ | Limit | Mass | Status |
|-----------------|------|-------|------|--------|
| | PPM | PPM | PPM | |
| Pyridaben | 0.01 | 0.20 | <LOQ | Pass |
| Spinosad | 0.01 | 0.20 | <LOQ | Pass |
| Spiromesifen | 0.01 | 0.20 | <LOQ | Pass |
| Spirotetramat | 0.01 | 0.20 | <LOQ | Pass |
| Spiroxamine | 0.01 | 0.40 | <LOQ | Pass |
| Tebuconazole | 0.01 | 0.40 | <LOQ | Pass |
| Thiacloprid | 0.01 | 0.20 | <LOQ | Pass |
| Thiamethoxam | 0.01 | 0.20 | <LOQ | Pass |
| Trifloxystrobin | 0.01 | 0.20 | <LOQ | Pass |

Methods: LCMS and GCMS

4150 98th Ave S
Fargo, ND
(888) 897-4367
www.hempinspection.com




John Schmidt
Analytical Chemist



Confident LIMS
All Rights Reserved
(866) 506-5866

This product has been tested by Adams Independent Testing using valid testing methodologies. Values reported apply only to the product tested and only as the sample was received. Adams Independent Testing makes no claims as to the efficacy, safety, or other risks associated with any detected or nondetected level of any compounds reported herein. This Certificate shall not be reproduced except in full, without the written approval of Adams Independent Testing. Test results that are Pass/Fail are reported using the Oregon Health Authority, Public Health Division - Chapter 333-007-0320, effective 1/1/2021. Results above the Limit will be considered Fail and will be in red. This is for informational purposes only and can be changed upon request. Measurement Uncertainty is not used for pass/fail conditions but available upon request.

TD Retail Group, LLC

8711 E Point Douglas Rd S #108
Cottage Grove, MN 55016

(651) 315-3377

Sample: 2406AIT0796.1652

Strain: N/A

Batch#: ; Batch Size: g

Sample Received: 06/28/2024; Report Created: 07/05/2024

IndaCouch - Fruit Punch

Ingestible, Soft Chew



Residual Solvents

Pass

Date Tested: 07/01/2024

| Analyte | LOQ | Limit | Mass | Status |
|-------------------|----------|----------|------|--------|
| | PPM | PPM | PPM | |
| 1,4-Dioxane | 71.250 | 380.000 | <LOQ | Pass |
| 2-Butanol | 437.500 | 5000.000 | <LOQ | Pass |
| 2-Ethoxy-Ethanol | 30.000 | 160.000 | <LOQ | Pass |
| 2-Propanol IPA | 437.500 | 5000.000 | <LOQ | Pass |
| Acetone | 437.500 | 5000.000 | <LOQ | Pass |
| Acetonitrile | 76.880 | 410.000 | <LOQ | Pass |
| Benzene | 0.375 | 2.000 | <LOQ | Pass |
| Butanes | 156.300 | 5000.000 | <LOQ | Pass |
| Cumene | 13.130 | 70.000 | <LOQ | Pass |
| Cyclohexane | 727.500 | 3880.000 | <LOQ | Pass |
| Dichloromethane | 112.500 | 600.000 | <LOQ | Pass |
| Ethanol | 437.500 | 5000.000 | <LOQ | Pass |
| Ethyl-Acetate | 437.500 | 5000.000 | <LOQ | Pass |
| Ethyl-Ether | 437.500 | 5000.000 | <LOQ | Pass |
| Ethylene Glycol | 116.300 | 620.000 | <LOQ | Pass |
| Ethylene Oxide | 9.375 | 50.000 | <LOQ | Pass |
| Heptane | 437.500 | 5000.000 | <LOQ | Pass |
| Hexanes | 217.500 | 290.000 | <LOQ | Pass |
| Isopropyl-Acetate | 437.500 | 5000.000 | <LOQ | Pass |
| Methanol | 312.500 | 3000.000 | <LOQ | Pass |
| Pentanes | 953.100 | 5000.000 | <LOQ | Pass |
| Propane | 31.250 | 5000.000 | <LOQ | Pass |
| Tetrahydrofuran | 135.000 | 720.000 | <LOQ | Pass |
| Toluene | 166.900 | 890.000 | <LOQ | Pass |
| Xylenes | 1221.000 | 2170.000 | <LOQ | Pass |

Method: GCMS (Headspace)

4150 98th Ave S
Fargo, ND
(888) 897-4367
www.hempinspection.com




John Schmidt

Analytical Chemist

Confident LIMS
All Rights Reserved
(866) 506-5866

This product has been tested by Adams Independent Testing using valid testing methodologies. Values reported apply only to the product tested and only as the sample was received. Adams Independent Testing makes no claims as to the efficacy, safety, or other risks associated with any detected or nondetected level of any compounds reported herein. This Certificate shall not be reproduced except in full, without the written approval of Adams Independent Testing. Test results that are Pass/Fail are reported using the Oregon Health Authority, Public Health Division - Chapter 333-007-0320, effective 1/1/2021. Results above the Limit will be considered Fail and will be in red. This is for informational purposes only and can be changed upon request. Measurement Uncertainty is not used for pass/fail conditions but available upon request.

TD Retail Group, LLC

8711 E Point Douglas Rd S #108
Cottage Grove, MN 55016

(651) 315-3377

Sample: 2406AIT0796.1653

Strain: N/A

Batch#: ; Batch Size: g

Sample Received: 06/28/2024; Report Created: 07/05/2024

IndaCouch - Berry Punch

Ingestible, Soft Chew



0.121%
34.3 mg/container
3.4 mg/serving
Total THC

0.111%
31.5 mg/container
3.1 mg/serving
Total CBD

0.232%
65.8 mg/container
6.6 mg/serving
Total Cannabinoids

Cannabinoids

Date Tested: 07/01/2024

| Analytes | % | mg/g | mg/ml | mg/serving | LOQ |
|----------|-------|-------|-------|------------|-------|
| CBC | <LOQ | <LOQ | <LOQ | <LOQ | 0.001 |
| CBD | 0.111 | 1.111 | 1.111 | 3.145 | 0.001 |
| CBDa | <LOQ | <LOQ | <LOQ | <LOQ | 0.001 |
| CBDV | <LOQ | <LOQ | <LOQ | <LOQ | 0.001 |
| CBG | <LOQ | <LOQ | <LOQ | <LOQ | 0.001 |
| CBGa | <LOQ | <LOQ | <LOQ | <LOQ | 0.001 |
| CBL | <LOQ | <LOQ | <LOQ | <LOQ | 0.001 |
| CBN | <LOQ | <LOQ | <LOQ | <LOQ | 0.001 |
| Δ8-THC | <LOQ | <LOQ | <LOQ | <LOQ | 0.001 |
| Δ9-THC | 0.121 | 1.212 | 1.212 | 3.431 | 0.001 |
| THCa | <LOQ | <LOQ | <LOQ | <LOQ | 0.001 |
| THCVa | <LOQ | <LOQ | <LOQ | <LOQ | 0.001 |

Method: HPLC
Total THC = THCa * 0.877 + Δ9-THC
Total CBD = CBDa * 0.877 + CBD

Total Cannabinoids represents the sum of all cannabinoids in the table above.
Results are reported on a dry weight basis: Cannabinoid % / (1.0 - moisture content % / 100) = Dry weight cannabinoids %
LOQ = Limit of Quantitation

Summary

Pass
Residual Solvents

Pass
Pesticides

Pass
Mycotoxins

Pass
Heavy Metals

Pass
Microbials

4150 98th Ave S
Fargo, ND
(888) 897-4367
www.hempinspection.com




John Schmidt
Analytical Chemist



Confident LIMS
All Rights Reserved
(866) 506-5866

This product has been tested by Adams Independent Testing using valid testing methodologies. Values reported apply only to the product tested and only as the sample was received. Adams Independent Testing makes no claims as to the efficacy, safety, or other risks associated with any detected or nondetected level of any compounds reported herein. This Certificate shall not be reproduced except in full, without the written approval of Adams Independent Testing. Test results that are Pass/Fail are reported using the Oregon Health Authority, Public Health Division - Chapter 333-007-0320, effective 1/1/2021. Results above the Limit will be considered Fail and will be in red. This is for informational purposes only and can be changed upon request. Measurement Uncertainty is not used for pass/fail conditions but available upon request.

TD Retail Group, LLC

8711 E Point Douglas Rd S #108
Cottage Grove, MN 55016

(651) 315-3377

Sample: 2406AIT0796.1653

Strain: N/A

Batch#: ; Batch Size: g

Sample Received: 06/28/2024; Report Created: 07/05/2024

IndaCouch - Berry Punch

Ingestible, Soft Chew

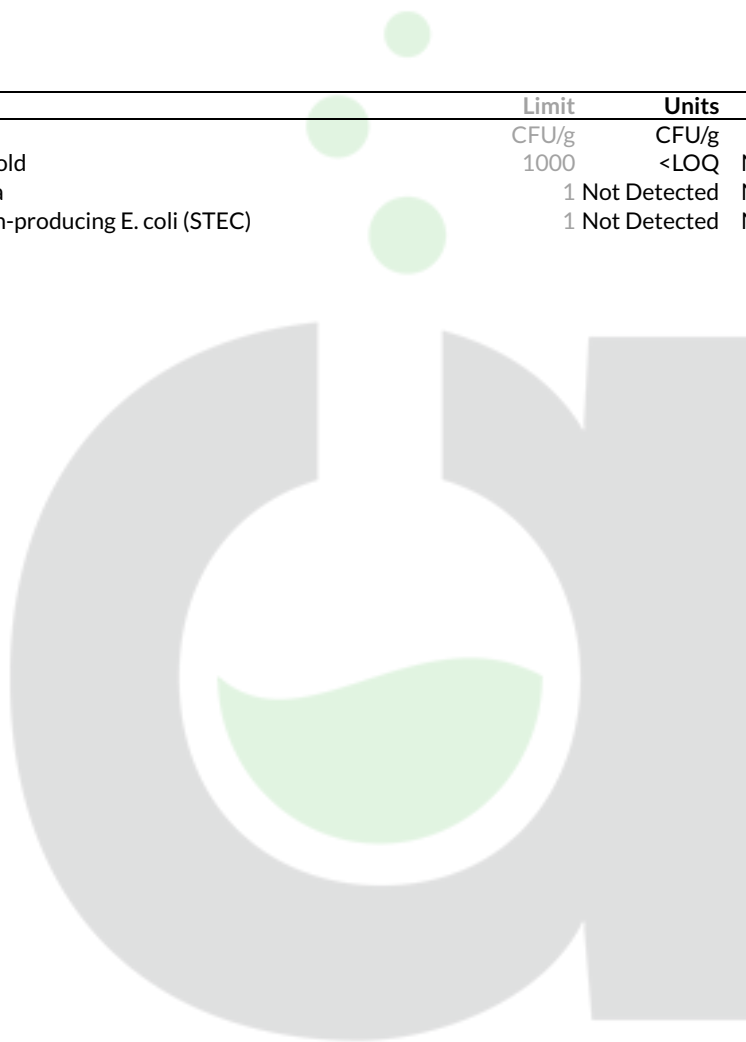


Microbials

Pass

Date Tested: 07/01/2024

| Analyte | Limit | Units | Status |
|--------------------------------------|-------|--------------|-------------|
| Yeast & Mold | 1000 | CFU/g | Not Present |
| Salmonella | 1 | Not Detected | Not Present |
| Shiga Toxin-producing E. coli (STEC) | 1 | Not Detected | Not Present |



Method: qPCR



John Schmidt

Analytical Chemist

TD Retail Group, LLC

8711 E Point Douglas Rd S #108
Cottage Grove, MN 55016

(651) 315-3377

Sample: 2406AIT0796.1653

Strain: N/A

Batch#: ; Batch Size: g

Sample Received: 06/28/2024; Report Created: 07/05/2024

IndaCouch - Berry Punch

Ingestible, Soft Chew



Mycotoxins

Pass

Date Tested: 07/01/2024

| Analyte | LOQ | Limit | Units | Status |
|--------------|------|-------|-------|--------|
| | PPB | PPB | PPB | |
| Aflatoxin B1 | 1.00 | 20.00 | <LOQ | Pass |
| Aflatoxin B2 | 1.00 | 20.00 | <LOQ | Pass |
| Aflatoxin G1 | 1.00 | 20.00 | <LOQ | Pass |
| Aflatoxin G2 | 1.00 | 20.00 | <LOQ | Pass |
| Ochratoxin A | 1.00 | 20.00 | <LOQ | Pass |



Method: LCMS

4150 98th Ave S
Fargo, ND
(888) 897-4367
www.hempinspection.com




John Schmidt
Analytical Chemist



Confident LIMS
All Rights Reserved
(866) 506-5866

This product has been tested by Adams Independent Testing using valid testing methodologies. Values reported apply only to the product tested and only as the sample was received. Adams Independent Testing makes no claims as to the efficacy, safety, or other risks associated with any detected or nondetected level of any compounds reported herein. This Certificate shall not be reproduced except in full, without the written approval of Adams Independent Testing. Test results that are Pass/Fail are reported using the Oregon Health Authority, Public Health Division - Chapter 333-007-0320, effective 1/1/2021. Results above the Limit will be considered Fail and will be in red. This is for informational purposes only and can be changed upon request. Measurement Uncertainty is not used for pass/fail conditions but available upon request.

TD Retail Group, LLC

8711 E Point Douglas Rd S #108
Cottage Grove, MN 55016

(651) 315-3377

Sample: 2406AIT0796.1653

Strain: N/A

Batch#: ; Batch Size: g

Sample Received: 06/28/2024; Report Created: 07/05/2024

IndaCouch - Berry Punch

Ingestible, Soft Chew

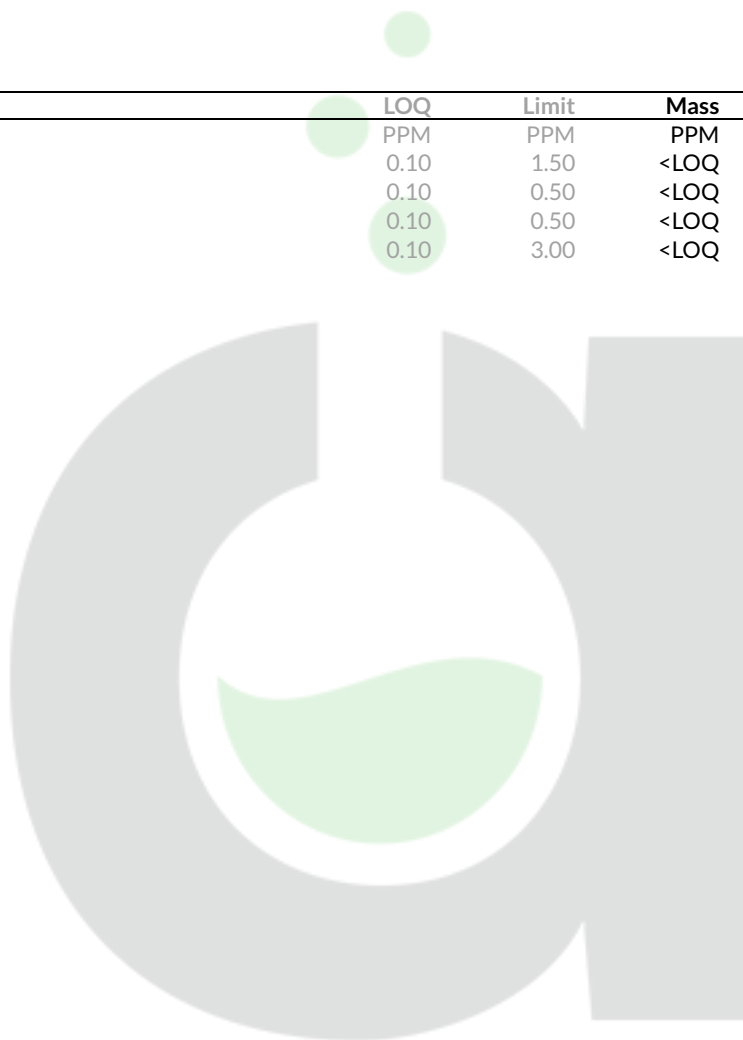


Heavy Metals

Pass

Date Tested: 07/01/2024

| Analyte | LOQ | Limit | Mass | Status |
|---------|------|-------|------|--------|
| | PPM | PPM | PPM | |
| Arsenic | 0.10 | 1.50 | <LOQ | Pass |
| Cadmium | 0.10 | 0.50 | <LOQ | Pass |
| Lead | 0.10 | 0.50 | <LOQ | Pass |
| Mercury | 0.10 | 3.00 | <LOQ | Pass |



Method: ICPMS

4150 98th Ave S
Fargo, ND
(888) 897-4367
www.hempinspection.com



John Schmidt

Analytical Chemist

Confident LIMS
All Rights Reserved
(866) 506-5866

This product has been tested by Adams Independent Testing using valid testing methodologies. Values reported apply only to the product tested and only as the sample was received. Adams Independent Testing makes no claims as to the efficacy, safety, or other risks associated with any detected or nondetected level of any compounds reported herein. This Certificate shall not be reproduced except in full, without the written approval of Adams Independent Testing. Test results that are Pass/Fail are reported using the Oregon Health Authority, Public Health Division - Chapter 333-007-0320, effective 1/1/2021. Results above the Limit will be considered Fail and will be in red. This is for informational purposes only and can be changed upon request. Measurement Uncertainty is not used for pass/fail conditions but available upon request.

TD Retail Group, LLC

8711 E Point Douglas Rd S #108
Cottage Grove, MN 55016

(651) 315-3377

Sample: 2406AIT0796.1653

Strain: N/A

Batch#: ; Batch Size: g

Sample Received: 06/28/2024; Report Created: 07/05/2024

IndaCouch - Berry Punch

Ingestible, Soft Chew



Pesticides

Pass

Date Tested: 07/01/2024

| Analyte | LOQ | Limit | Mass | Status |
|---------------------|------|-------|------|--------|
| | PPM | PPM | PPM | |
| Abamectin | 0.01 | 0.50 | <LOQ | Pass |
| Acephate | 0.01 | 0.40 | <LOQ | Pass |
| Acequinocyl | 0.01 | 2.00 | <LOQ | Pass |
| Acetamiprid | 0.01 | 0.20 | <LOQ | Pass |
| Aldicarb | 0.01 | 0.40 | <LOQ | Pass |
| Azoxystrobin | 0.01 | 0.20 | <LOQ | Pass |
| Bifenazate | 0.01 | 0.20 | <LOQ | Pass |
| Bifenthrin | 0.01 | 0.20 | <LOQ | Pass |
| Boscalid | 0.01 | 0.40 | <LOQ | Pass |
| Carbaryl | 0.01 | 0.20 | <LOQ | Pass |
| Carbofuran | 0.01 | 0.20 | <LOQ | Pass |
| Chlorantraniliprole | 0.01 | 0.20 | <LOQ | Pass |
| Chlorfenapyr | 0.01 | 1.00 | <LOQ | Pass |
| Chlorpyrifos | 0.01 | 0.20 | <LOQ | Pass |
| Clofentezine | 0.01 | 0.20 | <LOQ | Pass |
| Cyfluthrin | 0.01 | 1.00 | <LOQ | Pass |
| Cypermethrin | 0.01 | 1.00 | <LOQ | Pass |
| Daminozide | 0.01 | 1.00 | <LOQ | Pass |
| DDVP | 0.01 | 1.00 | <LOQ | Pass |
| Diazinon | 0.01 | 0.20 | <LOQ | Pass |
| Dimethoate | 0.01 | 0.20 | <LOQ | Pass |
| Ethoprophos | 0.01 | 0.20 | <LOQ | Pass |
| Etofenprox | 0.01 | 0.40 | <LOQ | Pass |
| Etoxazole | 0.01 | 0.20 | <LOQ | Pass |
| Fenoxycarb | 0.01 | 0.20 | <LOQ | Pass |

Methods: LCMS and GCMS

4150 98th Ave S
Fargo, ND
(888) 897-4367
www.hempinspection.com




John Schmidt
Analytical Chemist



Confident LIMS
All Rights Reserved
(866) 506-5866

This product has been tested by Adams Independent Testing using valid testing methodologies. Values reported apply only to the product tested and only as the sample was received. Adams Independent Testing makes no claims as to the efficacy, safety, or other risks associated with any detected or nondetected level of any compounds reported herein. This Certificate shall not be reproduced except in full, without the written approval of Adams Independent Testing. Test results that are Pass/Fail are reported using the Oregon Health Authority, Public Health Division - Chapter 333-007-0320, effective 1/1/2021. Results above the Limit will be considered Fail and will be in red. This is for informational purposes only and can be changed upon request. Measurement Uncertainty is not used for pass/fail conditions but available upon request.

TD Retail Group, LLC

8711 E Point Douglas Rd S #108
Cottage Grove, MN 55016

(651) 315-3377

Sample: 2406AIT0796.1653

Strain: N/A

Batch#: ; Batch Size: g

Sample Received: 06/28/2024; Report Created: 07/05/2024

IndaCouch - Berry Punch

Ingestible, Soft Chew



Pesticides

Pass

Date Tested: 07/01/2024

| Analyte | LOQ | Limit | Mass | Status |
|--------------------|------|-------|------|--------|
| | PPM | PPM | PPM | |
| Fenpyroximate | 0.01 | 0.40 | <LOQ | Pass |
| Fipronil | 0.01 | 0.40 | <LOQ | Pass |
| Fonicamid | 0.01 | 1.00 | <LOQ | Pass |
| Fludioxonil | 0.01 | 0.40 | <LOQ | Pass |
| Hexythiazox | 0.01 | 1.00 | <LOQ | Pass |
| Imazalil | 0.01 | 0.20 | <LOQ | Pass |
| Imidacloprid | 0.01 | 0.40 | <LOQ | Pass |
| Kresoxim Methyl | 0.01 | 0.40 | <LOQ | Pass |
| Malathion | 0.01 | 0.20 | <LOQ | Pass |
| Metalaxyl | 0.01 | 0.20 | <LOQ | Pass |
| Methiocarb | 0.01 | 0.20 | <LOQ | Pass |
| Methomyl | 0.01 | 0.40 | <LOQ | Pass |
| Methyl Parathion | 0.01 | 0.20 | <LOQ | Pass |
| MGK-264 | 0.01 | 0.20 | <LOQ | Pass |
| Myclobutanil | 0.01 | 0.20 | <LOQ | Pass |
| Naled | 0.01 | 0.50 | <LOQ | Pass |
| Oxamyl | 0.01 | 1.00 | <LOQ | Pass |
| Paclobutrazol | 0.01 | 0.40 | <LOQ | Pass |
| Permethrins | 0.01 | 0.20 | <LOQ | Pass |
| Phosmet | 0.01 | 0.20 | <LOQ | Pass |
| Piperonyl Butoxide | 0.01 | 2.00 | <LOQ | Pass |
| Prallethrin | 0.01 | 0.20 | <LOQ | Pass |
| Propiconazole | 0.01 | 0.40 | <LOQ | Pass |
| Propoxur | 0.01 | 0.20 | <LOQ | Pass |
| Pyrethrins | 0.01 | 1.00 | <LOQ | Pass |

Methods: LCMS and GCMS

4150 98th Ave S
Fargo, ND
(888) 897-4367
www.hempinspection.com




John Schmidt
Analytical Chemist



Confident LIMS
All Rights Reserved
(866) 506-5866

This product has been tested by Adams Independent Testing using valid testing methodologies. Values reported apply only to the product tested and only as the sample was received. Adams Independent Testing makes no claims as to the efficacy, safety, or other risks associated with any detected or nondetected level of any compounds reported herein. This Certificate shall not be reproduced except in full, without the written approval of Adams Independent Testing. Test results that are Pass/Fail are reported using the Oregon Health Authority, Public Health Division - Chapter 333-007-0320, effective 1/1/2021. Results above the Limit will be considered Fail and will be in red. This is for informational purposes only and can be changed upon request. Measurement Uncertainty is not used for pass/fail conditions but available upon request.

TD Retail Group, LLC

8711 E Point Douglas Rd S #108
Cottage Grove, MN 55016

(651) 315-3377

Sample: 2406AIT0796.1653

Strain: N/A

Batch#: ; Batch Size: g

Sample Received: 06/28/2024; Report Created: 07/05/2024

IndaCouch - Berry Punch

Ingestible, Soft Chew



Pesticides

Pass

Date Tested: 07/01/2024

| Analyte | LOQ | Limit | Mass | Status |
|-----------------|------|-------|------|--------|
| | PPM | PPM | PPM | |
| Pyridaben | 0.01 | 0.20 | <LOQ | Pass |
| Spinosad | 0.01 | 0.20 | <LOQ | Pass |
| Spiromesifen | 0.01 | 0.20 | <LOQ | Pass |
| Spirotetramat | 0.01 | 0.20 | <LOQ | Pass |
| Spiroxamine | 0.01 | 0.40 | <LOQ | Pass |
| Tebuconazole | 0.01 | 0.40 | <LOQ | Pass |
| Thiacloprid | 0.01 | 0.20 | <LOQ | Pass |
| Thiamethoxam | 0.01 | 0.20 | <LOQ | Pass |
| Trifloxystrobin | 0.01 | 0.20 | <LOQ | Pass |

Methods: LCMS and GCMS

4150 98th Ave S
Fargo, ND
(888) 897-4367
www.hempinspection.com




John Schmidt
Analytical Chemist



Confident LIMS
All Rights Reserved
(866) 506-5866

This product has been tested by Adams Independent Testing using valid testing methodologies. Values reported apply only to the product tested and only as the sample was received. Adams Independent Testing makes no claims as to the efficacy, safety, or other risks associated with any detected or nondetected level of any compounds reported herein. This Certificate shall not be reproduced except in full, without the written approval of Adams Independent Testing. Test results that are Pass/Fail are reported using the Oregon Health Authority, Public Health Division - Chapter 333-007-0320, effective 1/1/2021. Results above the Limit will be considered Fail and will be in red. This is for informational purposes only and can be changed upon request. Measurement Uncertainty is not used for pass/fail conditions but available upon request.

TD Retail Group, LLC

8711 E Point Douglas Rd S #108
Cottage Grove, MN 55016

(651) 315-3377

Sample: 2406AIT0796.1653

Strain: N/A

Batch#: ; Batch Size: g

Sample Received: 06/28/2024; Report Created: 07/05/2024

IndaCouch - Berry Punch

Ingestible, Soft Chew



Residual Solvents

Pass

Date Tested: 07/01/2024

| Analyte | LOQ | Limit | Mass | Status |
|-------------------|----------|----------|------|--------|
| | PPM | PPM | PPM | |
| 1,4-Dioxane | 71.250 | 380.000 | <LOQ | Pass |
| 2-Butanol | 437.500 | 5000.000 | <LOQ | Pass |
| 2-Ethoxy-Ethanol | 30.000 | 160.000 | <LOQ | Pass |
| 2-Propanol IPA | 437.500 | 5000.000 | <LOQ | Pass |
| Acetone | 437.500 | 5000.000 | <LOQ | Pass |
| Acetonitrile | 76.880 | 410.000 | <LOQ | Pass |
| Benzene | 0.375 | 2.000 | <LOQ | Pass |
| Butanes | 156.300 | 5000.000 | <LOQ | Pass |
| Cumene | 13.130 | 70.000 | <LOQ | Pass |
| Cyclohexane | 727.500 | 3880.000 | <LOQ | Pass |
| Dichloromethane | 112.500 | 600.000 | <LOQ | Pass |
| Ethanol | 437.500 | 5000.000 | <LOQ | Pass |
| Ethyl-Acetate | 437.500 | 5000.000 | <LOQ | Pass |
| Ethyl-Ether | 437.500 | 5000.000 | <LOQ | Pass |
| Ethylene Glycol | 116.300 | 620.000 | <LOQ | Pass |
| Ethylene Oxide | 9.375 | 50.000 | <LOQ | Pass |
| Heptane | 437.500 | 5000.000 | <LOQ | Pass |
| Hexanes | 217.500 | 290.000 | <LOQ | Pass |
| Isopropyl-Acetate | 437.500 | 5000.000 | <LOQ | Pass |
| Methanol | 312.500 | 3000.000 | <LOQ | Pass |
| Pentanes | 953.100 | 5000.000 | <LOQ | Pass |
| Propane | 31.250 | 5000.000 | <LOQ | Pass |
| Tetrahydrofuran | 135.000 | 720.000 | <LOQ | Pass |
| Toluene | 166.900 | 890.000 | <LOQ | Pass |
| Xylenes | 1221.000 | 2170.000 | <LOQ | Pass |

Method: GCMS (Headspace)




John Schmidt

Analytical Chemist

TD Retail Group, LLC

8711 E Point Douglas Rd S #108
Cottage Grove, MN 55016

(651) 315-3377

Sample: 2406AIT0796.1654

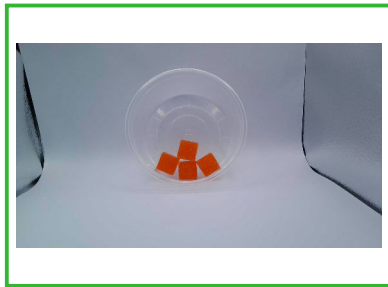
Strain: N/A

Batch#: ; Batch Size: g

Sample Received: 06/28/2024; Report Created: 07/05/2024

IndaCouch - Citrus Punch

Ingestible, Soft Chew



0.125%
35.4 mg/container
3.5 mg/serving
Total THC

0.116 %
32.9 mg/container
3.3 mg/serving
Total CBD

0.241%
68.3 mg/container
6.8 mg/serving
Total Cannabinoids

Cannabinoids

Date Tested: 07/01/2024

| Analytes | % | mg/g | mg/ml | mg/serving | LOQ |
|----------|-------|-------|-------|------------|-------|
| CBC | <LOQ | <LOQ | <LOQ | <LOQ | 0.001 |
| CBD | 0.116 | 1.163 | 1.163 | 3.291 | 0.001 |
| CBDa | <LOQ | <LOQ | <LOQ | <LOQ | 0.001 |
| CBDV | <LOQ | <LOQ | <LOQ | <LOQ | 0.001 |
| CBG | <LOQ | <LOQ | <LOQ | <LOQ | 0.001 |
| CBGa | <LOQ | <LOQ | <LOQ | <LOQ | 0.001 |
| CBL | <LOQ | <LOQ | <LOQ | <LOQ | 0.001 |
| CBN | <LOQ | <LOQ | <LOQ | <LOQ | 0.001 |
| Δ8-THC | <LOQ | <LOQ | <LOQ | <LOQ | 0.001 |
| Δ9-THC | 0.125 | 1.252 | 1.252 | 3.543 | 0.001 |
| THCa | <LOQ | <LOQ | <LOQ | <LOQ | 0.001 |
| THCVa | <LOQ | <LOQ | <LOQ | <LOQ | 0.001 |

Method: HPLC
Total THC = THCa * 0.877 + Δ9-THC
Total CBD = CBDa * 0.877 + CBD

Total Cannabinoids represents the sum of all cannabinoids in the table above.
Results are reported on a dry weight basis: Cannabinoid % / (1.0 - moisture content % / 100) = Dry weight cannabinoids %
LOQ = Limit of Quantitation

Summary

Pass
Residual Solvents

Pass
Pesticides

Pass
Mycotoxins

Pass
Heavy Metals

Pass
Microbials

4150 98th Ave S
 Fargo, ND
(888) 897-4367
www.hempinspection.com




John Schmidt
Analytical Chemist



Confident LIMS
All Rights Reserved
(866) 506-5866

This product has been tested by Adams Independent Testing using valid testing methodologies. Values reported apply only to the product tested and only as the sample was received. Adams Independent Testing makes no claims as to the efficacy, safety, or other risks associated with any detected or nondetected level of any compounds reported herein. This Certificate shall not be reproduced except in full, without the written approval of Adams Independent Testing. Test results that are Pass/Fail are reported using the Oregon Health Authority, Public Health Division - Chapter 333-007-0320, effective 1/1/2021. Results above the Limit will be considered Fail and will be in red. This is for informational purposes only and can be changed upon request. Measurement Uncertainty is not used for pass/fail conditions but available upon request.

TD Retail Group, LLC

8711 E Point Douglas Rd S #108
Cottage Grove, MN 55016

(651) 315-3377

Sample: 2406AIT0796.1654

Strain: N/A

Batch#: ; Batch Size: g

Sample Received: 06/28/2024; Report Created: 07/05/2024

IndaCouch - Citrus Punch

Ingestible, Soft Chew

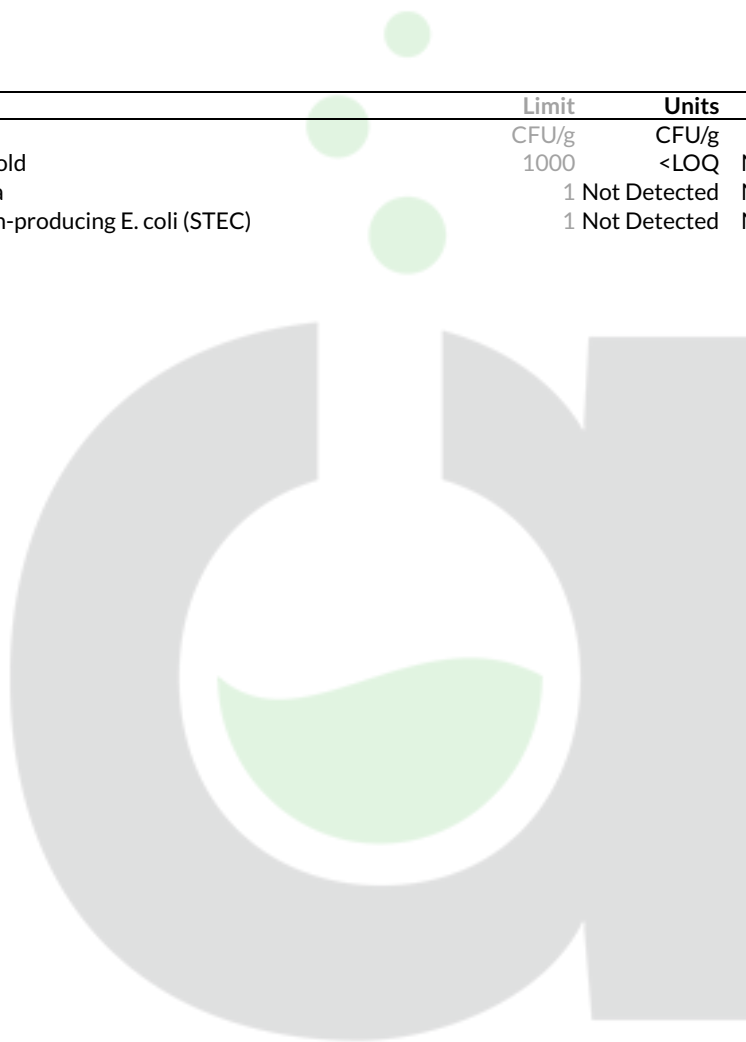


Microbials

Pass

Date Tested: 07/01/2024

| Analyte | Limit | Units | Status |
|--------------------------------------|-------|--------------|-------------|
| Yeast & Mold | 1000 | CFU/g | Not Present |
| Salmonella | 1 | Not Detected | Not Present |
| Shiga Toxin-producing E. coli (STEC) | 1 | Not Detected | Not Present |



Method: qPCR



John Schmidt

Analytical Chemist

TD Retail Group, LLC

8711 E Point Douglas Rd S #108
Cottage Grove, MN 55016

(651) 315-3377

Sample: 2406AIT0796.1654

Strain: N/A

Batch#: ; Batch Size: g

Sample Received: 06/28/2024; Report Created: 07/05/2024

IndaCouch - Citrus Punch

Ingestible, Soft Chew



Mycotoxins

Pass

Date Tested: 07/01/2024

| Analyte | LOQ | Limit | Units | Status |
|--------------|------|-------|-------|--------|
| | PPB | PPB | PPB | |
| Aflatoxin B1 | 1.00 | 20.00 | <LOQ | Pass |
| Aflatoxin B2 | 1.00 | 20.00 | <LOQ | Pass |
| Aflatoxin G1 | 1.00 | 20.00 | <LOQ | Pass |
| Aflatoxin G2 | 1.00 | 20.00 | <LOQ | Pass |
| Ochratoxin A | 1.00 | 20.00 | <LOQ | Pass |



Method: LCMS

4150 98th Ave S
Fargo, ND
(888) 897-4367
www.hempinspection.com




John Schmidt
Analytical Chemist



Confident LIMS
All Rights Reserved
(866) 506-5866

This product has been tested by Adams Independent Testing using valid testing methodologies. Values reported apply only to the product tested and only as the sample was received. Adams Independent Testing makes no claims as to the efficacy, safety, or other risks associated with any detected or nondetected level of any compounds reported herein. This Certificate shall not be reproduced except in full, without the written approval of Adams Independent Testing. Test results that are Pass/Fail are reported using the Oregon Health Authority, Public Health Division - Chapter 333-007-0320, effective 1/1/2021. Results above the Limit will be considered Fail and will be in red. This is for informational purposes only and can be changed upon request. Measurement Uncertainty is not used for pass/fail conditions but available upon request.

TD Retail Group, LLC

8711 E Point Douglas Rd S #108
Cottage Grove, MN 55016

(651) 315-3377

Sample: 2406AIT0796.1654

Strain: N/A

Batch#: ; Batch Size: g

Sample Received: 06/28/2024; Report Created: 07/05/2024

IndaCouch - Citrus Punch

Ingestible, Soft Chew

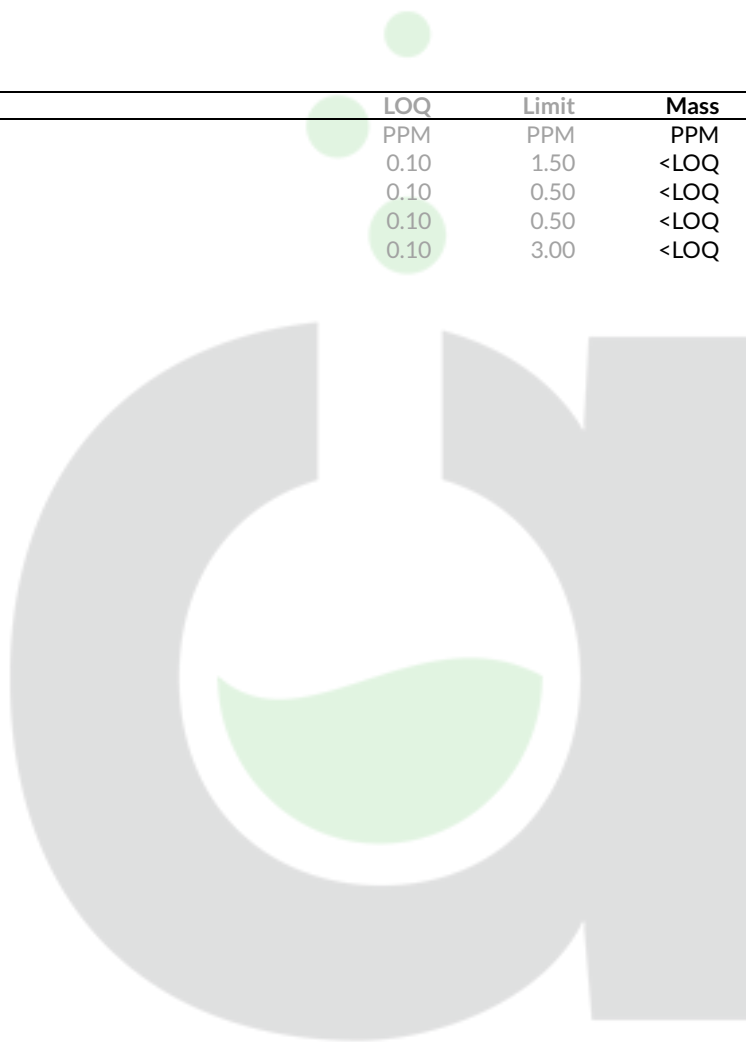


Heavy Metals

Pass

Date Tested: 07/01/2024

| Analyte | LOQ | Limit | Mass | Status |
|---------|------|-------|------|--------|
| | PPM | PPM | PPM | |
| Arsenic | 0.10 | 1.50 | <LOQ | Pass |
| Cadmium | 0.10 | 0.50 | <LOQ | Pass |
| Lead | 0.10 | 0.50 | <LOQ | Pass |
| Mercury | 0.10 | 3.00 | <LOQ | Pass |



Method: ICPMS



John Schmidt

Analytical Chemist

TD Retail Group, LLC

8711 E Point Douglas Rd S #108
Cottage Grove, MN 55016

(651) 315-3377

Sample: 2406AIT0796.1654

Strain: N/A

Batch#: ; Batch Size: g

Sample Received: 06/28/2024; Report Created: 07/05/2024

IndaCouch - Citrus Punch

Ingestible, Soft Chew



Pesticides

Pass

Date Tested: 07/01/2024

| Analyte | LOQ | Limit | Mass | Status |
|---------------------|------|-------|------|--------|
| | PPM | PPM | PPM | |
| Abamectin | 0.01 | 0.50 | <LOQ | Pass |
| Acephate | 0.01 | 0.40 | <LOQ | Pass |
| Acequinocyl | 0.01 | 2.00 | <LOQ | Pass |
| Acetamiprid | 0.01 | 0.20 | <LOQ | Pass |
| Aldicarb | 0.01 | 0.40 | <LOQ | Pass |
| Azoxystrobin | 0.01 | 0.20 | <LOQ | Pass |
| Bifenazate | 0.01 | 0.20 | <LOQ | Pass |
| Bifenthrin | 0.01 | 0.20 | <LOQ | Pass |
| Boscalid | 0.01 | 0.40 | <LOQ | Pass |
| Carbaryl | 0.01 | 0.20 | <LOQ | Pass |
| Carbofuran | 0.01 | 0.20 | <LOQ | Pass |
| Chlorantraniliprole | 0.01 | 0.20 | <LOQ | Pass |
| Chlorfenapyr | 0.01 | 1.00 | <LOQ | Pass |
| Chlorpyrifos | 0.01 | 0.20 | <LOQ | Pass |
| Clofentezine | 0.01 | 0.20 | <LOQ | Pass |
| Cyfluthrin | 0.01 | 1.00 | <LOQ | Pass |
| Cypermethrin | 0.01 | 1.00 | <LOQ | Pass |
| Daminozide | 0.01 | 1.00 | <LOQ | Pass |
| DDVP | 0.01 | 1.00 | <LOQ | Pass |
| Diazinon | 0.01 | 0.20 | <LOQ | Pass |
| Dimethoate | 0.01 | 0.20 | <LOQ | Pass |
| Ethoprophos | 0.01 | 0.20 | <LOQ | Pass |
| Etofenprox | 0.01 | 0.40 | <LOQ | Pass |
| Etoxazole | 0.01 | 0.20 | <LOQ | Pass |
| Fenoxycarb | 0.01 | 0.20 | <LOQ | Pass |

Methods: LCMS and GCMS

4150 98th Ave S
Fargo, ND
(888) 897-4367
www.hempinspection.com




John Schmidt
Analytical Chemist



Confident LIMS
All Rights Reserved
(866) 506-5866

This product has been tested by Adams Independent Testing using valid testing methodologies. Values reported apply only to the product tested and only as the sample was received. Adams Independent Testing makes no claims as to the efficacy, safety, or other risks associated with any detected or nondetected level of any compounds reported herein. This Certificate shall not be reproduced except in full, without the written approval of Adams Independent Testing. Test results that are Pass/Fail are reported using the Oregon Health Authority, Public Health Division - Chapter 333-007-0320, effective 1/1/2021. Results above the Limit will be considered Fail and will be in red. This is for informational purposes only and can be changed upon request. Measurement Uncertainty is not used for pass/fail conditions but available upon request.

TD Retail Group, LLC

8711 E Point Douglas Rd S #108
Cottage Grove, MN 55016

(651) 315-3377

Sample: 2406AIT0796.1654

Strain: N/A

Batch#: ; Batch Size: g

Sample Received: 06/28/2024; Report Created: 07/05/2024

IndaCouch - Citrus Punch

Ingestible, Soft Chew



Pesticides

Pass

Date Tested: 07/01/2024

| Analyte | LOQ | Limit | Mass | Status |
|--------------------|------|-------|------|--------|
| | PPM | PPM | PPM | |
| Fenpyroximate | 0.01 | 0.40 | <LOQ | Pass |
| Fipronil | 0.01 | 0.40 | <LOQ | Pass |
| Flonicamid | 0.01 | 1.00 | <LOQ | Pass |
| Fludioxonil | 0.01 | 0.40 | <LOQ | Pass |
| Hexythiazox | 0.01 | 1.00 | <LOQ | Pass |
| Imazalil | 0.01 | 0.20 | <LOQ | Pass |
| Imidacloprid | 0.01 | 0.40 | <LOQ | Pass |
| Kresoxim Methyl | 0.01 | 0.40 | <LOQ | Pass |
| Malathion | 0.01 | 0.20 | <LOQ | Pass |
| Metalaxyl | 0.01 | 0.20 | <LOQ | Pass |
| Methiocarb | 0.01 | 0.20 | <LOQ | Pass |
| Methomyl | 0.01 | 0.40 | <LOQ | Pass |
| Methyl Parathion | 0.01 | 0.20 | <LOQ | Pass |
| MGK-264 | 0.01 | 0.20 | <LOQ | Pass |
| Myclobutanil | 0.01 | 0.20 | <LOQ | Pass |
| Naled | 0.01 | 0.50 | <LOQ | Pass |
| Oxamyl | 0.01 | 1.00 | <LOQ | Pass |
| Paclobutrazol | 0.01 | 0.40 | <LOQ | Pass |
| Permethrins | 0.01 | 0.20 | <LOQ | Pass |
| Phosmet | 0.01 | 0.20 | <LOQ | Pass |
| Piperonyl Butoxide | 0.01 | 2.00 | <LOQ | Pass |
| Prallethrin | 0.01 | 0.20 | <LOQ | Pass |
| Propiconazole | 0.01 | 0.40 | <LOQ | Pass |
| Propoxur | 0.01 | 0.20 | <LOQ | Pass |
| Pyrethrins | 0.01 | 1.00 | <LOQ | Pass |

Methods: LCMS and GCMS

4150 98th Ave S
Fargo, ND
(888) 897-4367
www.hempinspection.com




John Schmidt
Analytical Chemist



Confident LIMS
All Rights Reserved
(866) 506-5866

This product has been tested by Adams Independent Testing using valid testing methodologies. Values reported apply only to the product tested and only as the sample was received. Adams Independent Testing makes no claims as to the efficacy, safety, or other risks associated with any detected or nondetected level of any compounds reported herein. This Certificate shall not be reproduced except in full, without the written approval of Adams Independent Testing. Test results that are Pass/Fail are reported using the Oregon Health Authority, Public Health Division - Chapter 333-007-0320, effective 1/1/2021. Results above the Limit will be considered Fail and will be in red. This is for informational purposes only and can be changed upon request. Measurement Uncertainty is not used for pass/fail conditions but available upon request.

TD Retail Group, LLC

8711 E Point Douglas Rd S #108
Cottage Grove, MN 55016

(651) 315-3377

Sample: 2406AIT0796.1654

Strain: N/A

Batch#: ; Batch Size: g

Sample Received: 06/28/2024; Report Created: 07/05/2024

IndaCouch - Citrus Punch

Ingestible, Soft Chew



Pesticides

Pass

Date Tested: 07/01/2024

| Analyte | LOQ | Limit | Mass | Status |
|-----------------|------|-------|------|--------|
| | PPM | PPM | PPM | |
| Pyridaben | 0.01 | 0.20 | <LOQ | Pass |
| Spinosad | 0.01 | 0.20 | <LOQ | Pass |
| Spiromesifen | 0.01 | 0.20 | <LOQ | Pass |
| Spirotetramat | 0.01 | 0.20 | <LOQ | Pass |
| Spiroxamine | 0.01 | 0.40 | <LOQ | Pass |
| Tebuconazole | 0.01 | 0.40 | <LOQ | Pass |
| Thiacloprid | 0.01 | 0.20 | <LOQ | Pass |
| Thiamethoxam | 0.01 | 0.20 | <LOQ | Pass |
| Trifloxystrobin | 0.01 | 0.20 | <LOQ | Pass |

Methods: LCMS and GCMS

4150 98th Ave S
Fargo, ND
(888) 897-4367
www.hempinspection.com




John Schmidt
Analytical Chemist



Confident LIMS
All Rights Reserved
(866) 506-5866

This product has been tested by Adams Independent Testing using valid testing methodologies. Values reported apply only to the product tested and only as the sample was received. Adams Independent Testing makes no claims as to the efficacy, safety, or other risks associated with any detected or nondetected level of any compounds reported herein. This Certificate shall not be reproduced except in full, without the written approval of Adams Independent Testing. Test results that are Pass/Fail are reported using the Oregon Health Authority, Public Health Division - Chapter 333-007-0320, effective 1/1/2021. Results above the Limit will be considered Fail and will be in red. This is for informational purposes only and can be changed upon request. Measurement Uncertainty is not used for pass/fail conditions but available upon request.

TD Retail Group, LLC

8711 E Point Douglas Rd S #108
Cottage Grove, MN 55016

(651) 315-3377

Sample: 2406AIT0796.1654

Strain: N/A

Batch#: ; Batch Size: g

Sample Received: 06/28/2024; Report Created: 07/05/2024

IndaCouch - Citrus Punch

Ingestible, Soft Chew



Residual Solvents

Pass

Date Tested: 07/01/2024

| Analyte | LOQ | Limit | Mass | Status |
|-------------------|----------|----------|------|--------|
| | PPM | PPM | PPM | |
| 1,4-Dioxane | 71.250 | 380.000 | <LOQ | Pass |
| 2-Butanol | 437.500 | 5000.000 | <LOQ | Pass |
| 2-Ethoxy-Ethanol | 30.000 | 160.000 | <LOQ | Pass |
| 2-Propanol IPA | 437.500 | 5000.000 | <LOQ | Pass |
| Acetone | 437.500 | 5000.000 | <LOQ | Pass |
| Acetonitrile | 76.880 | 410.000 | <LOQ | Pass |
| Benzene | 0.375 | 2.000 | <LOQ | Pass |
| Butanes | 156.300 | 5000.000 | <LOQ | Pass |
| Cumene | 13.130 | 70.000 | <LOQ | Pass |
| Cyclohexane | 727.500 | 3880.000 | <LOQ | Pass |
| Dichloromethane | 112.500 | 600.000 | <LOQ | Pass |
| Ethanol | 437.500 | 5000.000 | <LOQ | Pass |
| Ethyl-Acetate | 437.500 | 5000.000 | <LOQ | Pass |
| Ethyl-Ether | 437.500 | 5000.000 | <LOQ | Pass |
| Ethylene Glycol | 116.300 | 620.000 | <LOQ | Pass |
| Ethylene Oxide | 9.375 | 50.000 | <LOQ | Pass |
| Heptane | 437.500 | 5000.000 | <LOQ | Pass |
| Hexanes | 217.500 | 290.000 | <LOQ | Pass |
| Isopropyl-Acetate | 437.500 | 5000.000 | <LOQ | Pass |
| Methanol | 312.500 | 3000.000 | <LOQ | Pass |
| Pentanes | 953.100 | 5000.000 | <LOQ | Pass |
| Propane | 31.250 | 5000.000 | <LOQ | Pass |
| Tetrahydrofuran | 135.000 | 720.000 | <LOQ | Pass |
| Toluene | 166.900 | 890.000 | <LOQ | Pass |
| Xylenes | 1221.000 | 2170.000 | <LOQ | Pass |

Method: GCMS (Headspace)




John Schmidt

Analytical Chemist

Prepared for:
Prairie Hemp Products
205 South Mill St
Redwood Falls, MN 56283
jonhnyjstein@yahoo.com
(702) 481-0507

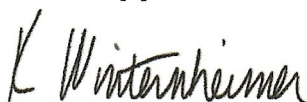
SOUR APPLE - 5MG THC/5MG CBD

| | | | |
|---|-------------------------------|-------------------------------|----------------------|
| Batch ID or Lot Number: J2024A03N | Test: Potency | Reported: 10Jan2024 | USDA License: N/A |
| Matrix: Unit | Test ID: T000266967 | Started: 08Jan2024 | Sampler ID: N/A |
| | Method(s): TM14 (HPLC-DAD) | Received: 08Jan2024 | Status: N/A |

Cannabinoids

| | LOD (mg) | LOQ (mg) | Result (mg) | Result (mg/g) | Notes |
|--|----------|----------|---------------|---------------|---|
| Cannabichromene (CBC) | 0.366 | 1.045 | 1.890 | 0.40 | # of Servings = 1, Sample Weight=4.474g |
| Cannabichromenic Acid (CBCA) | 0.335 | 0.956 | ND | ND | |
| Cannabidiol (CBD) | 0.979 | 2.652 | 20.030 | 4.50 | |
| Cannabidiolic Acid (CBDA) | 1.004 | 2.720 | ND | ND | |
| Cannabidivarin (CBDV) | 0.232 | 0.627 | <LOQ | <LOQ | |
| Cannabidivarinic Acid (CBDVA) | 0.419 | 1.135 | ND | ND | |
| Cannabigerol (CBG) | 0.208 | 0.593 | <LOQ | <LOQ | |
| Cannabigerolic Acid (CBGA) | 0.869 | 2.481 | ND | ND | |
| Cannabinol (CBN) | 0.271 | 0.774 | ND | ND | |
| Cannabinolic Acid (CBNA) | 0.593 | 1.693 | ND | ND | |
| Delta 8-Tetrahydrocannabinol (Delta 8-THC) | 1.036 | 2.956 | ND | ND | |
| Delta 9-Tetrahydrocannabinol (Delta 9-THC) | 0.941 | 2.684 | 4.720 | ND | |
| Delta 9-Tetrahydrocannabinolic Acid (THCA-A) | 0.833 | 2.378 | ND | ND | |
| Tetrahydrocannabivarin (THCV) | 0.189 | 0.540 | ND | ND | |
| Tetrahydrocannabivarinic Acid (THCVA) | 0.735 | 2.098 | ND | ND | |
| Total Cannabinoids | | | 24.753 | 4.90 | |
| Total Potential THC | | | 4.720 | ND | |
| Total Potential CBD | | | 20.030 | 4.50 | |

Final Approval



Karen Winternheimer
10Jan2024
12:08:00 PM MST



Sam Smith
10Jan2024
12:10:00 PM MST



PREPARED BY / DATE

APPROVED BY / DATE

<https://results.botanacor.com/api/v1/coas/uuid/1bdfb3b3-a919-447b-8f83-88de4a543e98>

Definitions

% = % (w/w) = Percent (weight of analyte / weight of product). ND = None Detected (defined by dynamic range of the method).
Total Potential Delta 9-THC or CBD is calculated to take into account the loss of a carboxyl group during decarboxylation step, using the following formulas: Total Potential Delta 9-THC = Delta 9-THC + (Delta 9-THCa *(0.877)) and Total CBD = CBD + (CBDA *(0.877)).

Testing results are based solely upon the sample submitted to SC Laboratories, Inc., in the condition it was received. SC Laboratories, Inc., warrants that all analytical work is conducted professionally in accordance with all applicable standard laboratory practices using validated methods. Data was generated using an unbroken chain of comparison to NIST traceable Reference Standards and Certified Reference Materials. This report may not be reproduced, except in full, without the written approval of SC Laboratories, Inc. ISO/IEC 17025:2017 A2LA Cert #: 4329.02 Chemical; 4329.03 Biological.



Cert #4329.02
1bdfb3b3a919447b8f8388de4a543e98.1

Prepared for:
Prairie Hemp Products
205 South Mill St
Redwood Falls, MN 56283
jonhnnystein@yahoo.com
(702) 481-0507

SOUR APPLE - 5MG THC/5MG CBD

| | | | |
|---|-------------------------------|-------------------------------|----------------------|
| Batch ID or Lot Number: J2024A03N | Test: Potency | Reported: 10Jan2024 | USDA License: N/A |
| Matrix: Unit | Test ID: T000266967 | Started: 08Jan2024 | Sampler ID: N/A |
| | Method(s): TM14 (HPLC-DAD) | Received: 08Jan2024 | Status: N/A |

Cannabinoids

| | LOD (mg) | LOQ (mg) | Result (mg) | Result (mg/g) | Notes |
|--|----------|----------|---------------|---------------|---|
| Cannabichromene (CBC) | 0.366 | 1.045 | 1.890 | 0.40 | # of Servings = 1, Sample Weight=4.474g |
| Cannabichromenic Acid (CBCA) | 0.335 | 0.956 | ND | ND | |
| Cannabidiol (CBD) | 0.979 | 2.652 | 20.030 | 4.50 | |
| Cannabidiolic Acid (CBDA) | 1.004 | 2.720 | ND | ND | |
| Cannabidivarin (CBDV) | 0.232 | 0.627 | <LOQ | <LOQ | |
| Cannabidivarinic Acid (CBDVA) | 0.419 | 1.135 | ND | ND | |
| Cannabigerol (CBG) | 0.208 | 0.593 | <LOQ | <LOQ | |
| Cannabigerolic Acid (CBGA) | 0.869 | 2.481 | ND | ND | |
| Cannabinol (CBN) | 0.271 | 0.774 | ND | ND | |
| Cannabinolic Acid (CBNA) | 0.593 | 1.693 | ND | ND | |
| Delta 8-Tetrahydrocannabinol (Delta 8-THC) | 1.036 | 2.956 | ND | ND | |
| Delta 9-Tetrahydrocannabinol (Delta 9-THC) | 0.941 | 2.684 | 4.720 | ND | |
| Delta 9-Tetrahydrocannabinolic Acid (THCA-A) | 0.833 | 2.378 | ND | ND | |
| Tetrahydrocannabivarin (THCV) | 0.189 | 0.540 | ND | ND | |
| Tetrahydrocannabivarinic Acid (THCVA) | 0.735 | 2.098 | ND | ND | |
| Total Cannabinoids | | | 24.753 | 4.90 | |
| Total Potential THC | | | 4.720 | ND | |
| Total Potential CBD | | | 20.030 | 4.50 | |

Final Approval



Karen Winternheimer
10Jan2024
12:08:00 PM MST



Sam Smith
10Jan2024
12:10:00 PM MST

PREPARED BY / DATE

APPROVED BY / DATE



<https://results.botanacor.com/api/v1/coas/uuid/1bdfb3b3-a919-447b-8f83-88de4a543e98>

Definitions

% = % (w/w) = Percent (weight of analyte / weight of product). ND = None Detected (defined by dynamic range of the method).
Total Potential Delta 9-THC or CBD is calculated to take into account the loss of a carboxyl group during decarboxylation step, using the following formulas: Total Potential Delta 9-THC = Delta 9-THC + (Delta 9-THCa *(0.877)) and Total CBD = CBD + (CBDA *(0.877)).

Prepared for:
Prairie Hemp Products
205 South Mill St
Redwood Falls, MN 56283
johnhnyjstein@yahoo.com
(702) 481-0507

BERRY - 5MG THC/5MG CBD

| | | | |
|---|---------------------------------------|-----------------------------|-------------|
| Batch ID or Lot Number: J2023U13N | Test, Test ID and Methods: Various | Matrix: Finished Product | Page 1 of 3 |
| Reported: 29Jun2023 | Started: 28Jun2023 | Received: 28Jun2023 | |

Pesticides

Test ID: T000247661

Methods: TM17

(LC-QQ LC MS/MS)

| | Dynamic Range (ppb) | Result (ppb) | | Dynamic Range (ppb) | Result (ppb) |
|---------------------|---------------------|--------------|-----------------|---------------------|--------------|
| Abamectin | 308 - 2726 | ND | Malathion | 288 - 2702 | ND |
| Acephate | 43 - 2716 | ND | Metalaxyl | 46 - 2683 | ND |
| Acetamiprid | 42 - 2723 | ND | Methiocarb | 42 - 2713 | ND |
| Azoxystrobin | 46 - 2669 | ND | Methomyl | 42 - 2746 | ND |
| Bifenazate | 44 - 2667 | ND | MGK 264 1 | 165 - 1708 | ND |
| Boscalid | 34 - 2701 | ND | MGK 264 2 | 103 - 1089 | ND |
| Carbaryl | 39 - 2722 | ND | Myclobutanil | 45 - 2719 | ND |
| Carbofuran | 43 - 2710 | ND | Naled | 44 - 2717 | ND |
| Chlorantraniliprole | 43 - 2726 | ND | Oxamyl | 41 - 2764 | ND |
| Chlorpyrifos | 39 - 2759 | ND | Paclbutrazol | 46 - 2715 | ND |
| Clofentezine | 288 - 2741 | ND | Permethrin | 275 - 2730 | ND |
| Diazinon | 282 - 2686 | ND | Phosmet | 46 - 2656 | ND |
| Dichlorvos | 285 - 2755 | ND | Prophos | 293 - 2688 | ND |
| Dimethoate | 41 - 2731 | ND | Propoxur | 43 - 2714 | ND |
| E-Fenpyroximate | 272 - 2762 | ND | Pyridaben | 282 - 2760 | ND |
| Etofenprox | 43 - 2725 | ND | Spinosad A | 30 - 2076 | ND |
| Etoxazole | 278 - 2748 | ND | Spinosad D | 58 - 670 | ND |
| Fenoxycarb | 13 - 2670 | ND | Spiromesifen | 269 - 2733 | ND |
| Fipronil | 60 - 2716 | ND | Spirotetramat | 284 - 2693 | ND |
| Flonicamid | 52 - 2707 | ND | Spiroxamine 1 | 18 - 1200 | ND |
| Fludioxonil | 306 - 2679 | ND | Spiroxamine 2 | 24 - 1504 | ND |
| Hexythiazox | 40 - 2786 | ND | Tebuconazole | 287 - 2718 | ND |
| Imazalil | 267 - 2685 | ND | Thiacloprid | 41 - 2710 | ND |
| Imidacloprid | 45 - 2814 | ND | Thiamethoxam | 39 - 2741 | ND |
| Kresoxim-methyl | 45 - 2697 | ND | Trifloxystrobin | 44 - 2705 | ND |

Final Approval

K Winternheimer
Karen Winternheimer
29Jun2023
10:44:00 AM MDT
PREPARED BY / DATE

Samantha Smith
Sam Smith
29Jun2023
10:46:00 AM MDT
APPROVED BY / DATE

Prepared for:
Prairie Hemp Products
205 South Mill St
Redwood Falls, MN 56283
jonhnyjstein@yahoo.com
(702) 481-0507

BERRY - 5MG THC/5MG CBD

| | | | |
|---|---------------------------------------|-----------------------------|-------------|
| Batch ID or Lot Number: J2023U13N | Test, Test ID and Methods: Various | Matrix: Finished Product | Page 2 of 3 |
| Reported: 29Jun2023 | Started: 28Jun2023 | Received: 28Jun2023 | |

Cannabinoids

Test ID: T000247660

| Methods: TM14 (HPLC-DAD) | LOD (mg) | LOQ (mg) | Result (mg) | Result (mg/g) | Notes |
|--|----------|----------|---------------|---------------|---|
| Cannabichromene (CBC) | 0.383 | 1.130 | ND | ND | # of Servings = 1, Sample Weight=4.296g |
| Cannabichromenic Acid (CBCA) | 0.350 | 1.034 | ND | ND | |
| Cannabidiol (CBD) | 1.130 | 2.909 | 20.083 | ND | |
| Cannabidiolic Acid (CBDA) | 1.159 | 2.984 | ND | ND | |
| Cannabidivarin (CBDV) | 0.267 | 0.688 | ND | ND | |
| Cannabidivarinic Acid (CBDVA) | 0.483 | 1.245 | ND | ND | |
| Cannabigerol (CBG) | 0.217 | 0.642 | ND | ND | |
| Cannabigerolic Acid (CBGA) | 0.908 | 2.683 | ND | ND | |
| Cannabinol (CBN) | 0.283 | 0.837 | ND | ND | |
| Cannabinolic Acid (CBNA) | 0.620 | 1.830 | ND | ND | |
| Delta 8-Tetrahydrocannabinol (Delta 8-THC) | 1.082 | 3.196 | ND | ND | |
| Delta 9-Tetrahydrocannabinol (Delta 9-THC) | 0.983 | 2.903 | 4.450 | 1.00 | |
| Delta 9-Tetrahydrocannabinolic Acid (THCA-A) | 0.871 | 2.572 | ND | ND | |
| Tetrahydrocannabivarin (THCV) | 0.198 | 0.584 | ND | ND | |
| Tetrahydrocannabivarinic Acid (THCVA) | 0.768 | 2.269 | ND | ND | |
| Total Cannabinoids | | | 24.533 | 1.00 | |
| Total Potential THC | | | 4.450 | 1.00 | |
| Total Potential CBD | | | 20.083 | ND | |

Final Approval

K Winternheimer
Karen Winternheimer
30Jun2023
08:23:00 AM MDT
PREPARED BY / DATE

Samantha Smith
Sam Smith
30Jun2023
08:24:00 AM MDT
APPROVED BY / DATE

Heavy Metals

Test ID: T000247662

Methods: TM19 (ICP-MS); Heavy

| Metals | Dynamic Range (ppm) | Result (ppm) | Notes |
|---------|---------------------|--------------|-------|
| Arsenic | 0.03 - 3.25 | ND | |
| Cadmium | 0.05 - 4.67 | ND | |
| Mercury | 0.04 - 3.85 | ND | |
| Lead | 0.04 - 3.98 | ND | |

Final Approval

Samantha Smith
Sam Smith
30Jun2023
10:19:00 AM MDT
PREPARED BY / DATE

K Winternheimer
Karen Winternheimer
30Jun2023
10:25:00 AM MDT
APPROVED BY / DATE

Prepared for:
Prairie Hemp Products
205 South Mill St
Redwood Falls, MN 56283
jonhnyjstein@yahoo.com
(702) 481-0507

BERRY - 5MG THC/5MG CBD

| | | | |
|---|---------------------------------------|-----------------------------|-------------|
| Batch ID or Lot Number: J2023U13N | Test, Test ID and Methods: Various | Matrix: Finished Product | Page 3 of 3 |
| Reported: 29Jun2023 | Started: 28Jun2023 | Received: 28Jun2023 | |



<https://results.botanacor.com/api/v1/coas/uuid/082efce3-b445-4ecf-94f1-1d678f4611b7>

Definitions
LOD = Limit of Detection, ULOQ = Upper Limit of Quantitation, LLOQ = Lower Limit of Quantitation, PPB = Parts per Billion, % = % (w/w) = Percent (weight of analyte / weight of product), ND = None Detected (defined by dynamic range of the method). Total Potential Delta 9-THC or CBD is calculated to take into account the loss of a carboxyl group during decarboxylation step, using the following formulas: Total Potential Delta 9-THC = Delta 9-THC + (Delta 9-THCa * (0.877)) and Total CBD = CBD + (CBDa * (0.877)). Fail equates to a concentration level of Delta 9-THC, on a dry weight basis, higher than 0.3 percent + or - the measurement uncertainty. Total Potential THC is calculated using the following formulas to take into account the loss of a carboxyl group during decarboxylation step. Total THC = THC + (THCa * (0.877)). ALOQ = Above Limit Of Quantitation (defined by dynamic range of the method), CFU/g = Colony Forming Units per Gram. Values recorded in scientific notation, a common microbial practice of expressing numbers that are too large to be conveniently written in decimal form. Examples: 10² = 100 CFU, 10³ = 1,000 CFU, 10⁴ = 10,000 CFU, 10⁵ = 100,000 CFU.

Testing results are based solely upon the sample submitted to SC Laboratories, Inc., in the condition it was received. SC Laboratories, Inc., warrants that all analytical work is conducted professionally in accordance with all applicable standard laboratory practices using validated methods. Data was generated using an unbroken chain of comparison to NIST traceable Reference Standards and Certified Reference Materials. This report may not be reproduced, except in full, without the written approval of SC Laboratories, Inc. ISO/IEC 17025:2017 Accredited by A2LA. Some tests listed on this COA may not be within our scope of A2LA accreditation. Please visit [A2LA for more details](#).



Cert #4329 02
082efce3b4454ecf94f11d678f4611b7.1

Prepared for:
Prairie Hemp Products
205 South Mill St
Redwood Falls, MN 56283
jonhnyjstein@yahoo.com
(702) 481-0507

CITRUS - 5MG THC/5MG CBD

| | | | |
|---|-------------------------------|-------------------------------|----------------------|
| Batch ID or Lot Number: J2024A02N | Test: Potency | Reported: 10Jan2024 | USDA License: N/A |
| Matrix: Unit | Test ID: T000266957 | Started: 08Jan2024 | Sampler ID: N/A |
| | Method(s): TM14 (HPLC-DAD) | Received: 08Jan2024 | Status: N/A |

Cannabinoids

| | LOD (mg) | LOQ (mg) | Result (mg) | Result (mg/g) | Notes |
|--|----------|----------|---------------|---------------|---|
| Cannabichromene (CBC) | 0.402 | 1.146 | ND | ND | # of Servings = 1, Sample Weight=4.326g |
| Cannabichromenic Acid (CBCA) | 0.367 | 1.048 | ND | ND | |
| Cannabidiol (CBD) | 1.074 | 2.908 | 20.003 | ND | |
| Cannabidiolic Acid (CBDA) | 1.101 | 2.983 | ND | ND | |
| Cannabidivarin (CBDV) | 0.254 | 0.688 | ND | ND | |
| Cannabidivarinic Acid (CBDVA) | 0.459 | 1.244 | ND | ND | |
| Cannabigerol (CBG) | 0.228 | 0.651 | ND | ND | |
| Cannabigerolic Acid (CBGA) | 0.953 | 2.720 | ND | ND | |
| Cannabinol (CBN) | 0.298 | 0.849 | ND | ND | |
| Cannabinolic Acid (CBNA) | 0.650 | 1.856 | ND | ND | |
| Delta 8-Tetrahydrocannabinol (Delta 8-THC) | 1.136 | 3.241 | ND | ND | |
| Delta 9-Tetrahydrocannabinol (Delta 9-THC) | 1.032 | 2.943 | 5.450 | 1.30 | |
| Delta 9-Tetrahydrocannabinolic Acid (THCA-A) | 0.914 | 2.608 | ND | ND | |
| Tetrahydrocannabivarin (THCV) | 0.207 | 0.592 | ND | ND | |
| Tetrahydrocannabivarinic Acid (THCVA) | 0.806 | 2.300 | ND | ND | |
| Total Cannabinoids | | | 25.453 | 1.30 | |
| Total Potential THC | | | 5.450 | 1.30 | |
| Total Potential CBD | | | 20.003 | ND | |

Final Approval



Karen Winternheimer
10Jan2024
12:08:00 PM MST



Sam Smith
10Jan2024
12:10:00 PM MST

PREPARED BY / DATE

APPROVED BY / DATE



<https://results.botanacor.com/api/v1/coas/uuid/610d1a52-71a3-48c4-bebf-e9a48bf03964>

Definitions

% = % (w/w) = Percent (weight of analyte / weight of product). ND = None Detected (defined by dynamic range of the method).
Total Potential Delta 9-THC or CBD is calculated to take into account the loss of a carboxyl group during decarboxylation step, using the following formulas: Total Potential Delta 9-THC = Delta 9-THC + (Delta 9-THCa *(0.877)) and Total CBD = CBD + (CBDA *(0.877)).


Prepared for:
Prairie Hemp Products
205 South Mill St
Redwood Falls, MN 56283
jonhnyjstein@yahoo.com
(702) 481-0507

CITRUS - 5MG THC/5MG CBD

| | | | |
|---|-------------------------------|-------------------------------|----------------------|
| Batch ID or Lot Number: J2024A02N | Test: Potency | Reported: 10Jan2024 | USDA License: N/A |
| Matrix: Unit | Test ID: T000266957 | Started: 08Jan2024 | Sampler ID: N/A |
| | Method(s): TM14 (HPLC-DAD) | Received: 08Jan2024 | Status: N/A |

| Cannabinoids | LOD (mg) | LOQ (mg) | Result (mg) | Result (mg/g) | Notes |
|--|----------|----------|---------------|---------------|---|
| Cannabichromene (CBC) | 0.402 | 1.146 | ND | ND | # of Servings = 1, Sample Weight=4.326g |
| Cannabichromenic Acid (CBCA) | 0.367 | 1.048 | ND | ND | |
| Cannabidiol (CBD) | 1.074 | 2.908 | 20.003 | ND | |
| Cannabidiolic Acid (CBDA) | 1.101 | 2.983 | ND | ND | |
| Cannabidivarin (CBDV) | 0.254 | 0.688 | ND | ND | |
| Cannabidivarinic Acid (CBDVA) | 0.459 | 1.244 | ND | ND | |
| Cannabigerol (CBG) | 0.228 | 0.651 | ND | ND | |
| Cannabigerolic Acid (CBGA) | 0.953 | 2.720 | ND | ND | |
| Cannabinol (CBN) | 0.298 | 0.849 | ND | ND | |
| Cannabinolic Acid (CBNA) | 0.650 | 1.856 | ND | ND | |
| Delta 8-Tetrahydrocannabinol (Delta 8-THC) | 1.136 | 3.241 | ND | ND | |
| Delta 9-Tetrahydrocannabinol (Delta 9-THC) | 1.032 | 2.943 | 5.450 | 1.30 | |
| Delta 9-Tetrahydrocannabinolic Acid (THCA-A) | 0.914 | 2.608 | ND | ND | |
| Tetrahydrocannabivarin (THCV) | 0.207 | 0.592 | ND | ND | |
| Tetrahydrocannabivarinic Acid (THCVA) | 0.806 | 2.300 | ND | ND | |
| Total Cannabinoids | | | 25.453 | 1.30 | |
| Total Potential THC | | | 5.450 | 1.30 | |
| Total Potential CBD | | | 20.003 | ND | |

Final Approval



Karen Winternheimer
10Jan2024
12:08:00 PM MST



Sam Smith
10Jan2024
12:10:00 PM MST

PREPARED BY / DATE

APPROVED BY / DATE



<https://results.botanacor.com/api/v1/coas/uuid/610d1a52-71a3-48c4-bebf-e9a48bf03964>

Definitions

% = % (w/w) = Percent (weight of analyte / weight of product). ND = None Detected (defined by dynamic range of the method).

Total Potential Delta 9-THC or CBD is calculated to take into account the loss of a carboxyl group during decarboxylation step, using the following formulas: Total Potential Delta 9-THC = Delta 9-THC + (Delta 9-THCa *(0.877)) and Total CBD = CBD + (CBDA *(0.877)).

Testing results are based solely upon the sample submitted to SC Laboratories, Inc., in the condition it was received. SC Laboratories, Inc., warrants that all analytical work is conducted professionally in accordance with all applicable standard laboratory practices using validated methods. Data was generated using an unbroken chain of comparison to NIST traceable Reference Standards and Certified Reference Materials. This report may not be reproduced, except in full, without the written approval of SC Laboratories, Inc. ISO/IEC 17025:2017 A2LA Cert #: 4329.02 Chemical: 4329.03 Biological.



Cert #4329.02
610d1a5271a348c4bebf9a48bf03964.1